




International House

Sydney City | Bondi | Darwin | Melbourne
Gold Coast | Byron Bay | Adelaide



Business College at 



ACCOMMODATION

We provide a range of supportive and comfortable accommodation options, so you can focus on your learning and enjoy your time in Australia!



**SYDNEY
CITY**



BONDI

**IH Sydney & IH Bondi
 Accommodation 2023**



Accommodation Placement Fee: \$350
 VIP: \$410



APU/ADO Service: \$200



Payment is due at least 4 weeks prior to student arrival



Living cost in Australia per week:
 - Groceries and meals: \$200
 - Public Transport: \$60



HOMESTAY

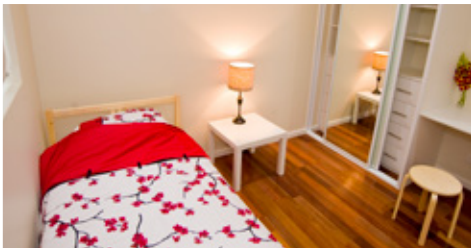
Living with a friendly Australian family is the most popular option. On average, homestay families live about 40 to 60 minutes by public transport from the school. Homestay accommodation includes breakfast & dinner from Monday to Friday, plus lunch on weekends.

·Minimum length of stay: 4 weeks (subject to length of course)
 Contact us for further information: accommodation@ihsydney.com.au
 *VIP rooms include use of a private bathroom (subject to availability)

Weekly Rates 2023/ week	
Standard Single	\$380/ VIP \$490*
Twin Share <i>(Students arriving together)</i>	\$350
Extra Night <i>Standard Single</i>	\$80/ VIP \$100*
Special Diet	\$80

RESIDENTIAL

2Stay / www.2stay.com.au



Modern & fully-furnished, open-plan living area with TV, fully-equipped kitchen, shared bathrooms, Wi-Fi & utilities included, coin-operated laundry.

·Minimum length of stay: 4 weeks
 ·Maximum length of stay: 12 weeks
 ·Linen pack: \$90

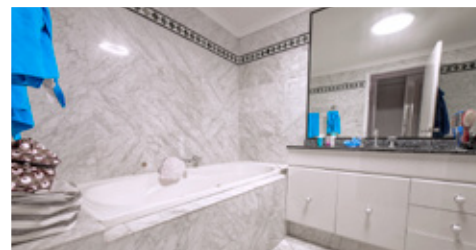
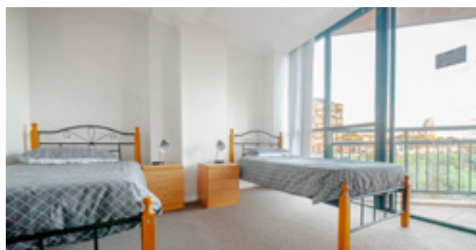
Type
 Shared Apartments & Houses

Location
 Kingsford, Randwick, North Sydney

*Security deposit (bond) of 4 weeks rent and \$200 cleaning fee to be paid prior to booking

Weekly Rates 2023/ week	
Standard Single	\$395
Extra night Single	\$65
Studio	\$560
Twin	\$275
Extra night Twin	\$40

Accommodation 4 Students (A4S) / www.a4s.com.au



Fully-furnished apartments in a modern residential complex, with fully-equipped kitchen and shared bathrooms. Laundry facilities (coin-operated machines). Wi-Fi included. Bed linen provided. Utility expenses included. Gym and pool in all Sydney City apartment buildings.
 ·Minimum length of stay: 4 weeks



Type
Shared Apartments



Location
Sydney City (Pyrmont, Ultimo, Haymarket, CBD) or Suburbs (Artarmon, Rockdale, Kogarah, Lane Cove, Ashfield)

*Security deposit (bond) of 4 weeks rent and \$200 cleaning fee to be paid prior to booking

Weekly Rates 2023/ week	
Twin Share <i>Sydney City</i>	\$290
Standard Single <i>Suburb</i>	\$300
Extra Night <i>Standard Single - Suburb</i>	\$65
Twin Share <i>Suburb</i>	\$200
Extra Night <i>Twin Share - Suburb & City</i>	\$50
Triple Room <i>Suburb</i>	\$180

Furnished Property Group (Jack's Place & Yurong) / www.furnishedpropertygroup.com.au



Student residence with 40 single rooms, fully equipped kitchens, lounge areas with cable TV, separate male and female shared bathrooms, communal study room, roof-top terrace with outdoor furniture and BBQ. Internet in every room. On-site staff. Laundry facilities (coin-operated machines). Bed linen provided.
 ·Minimum length of stay: 4 weeks



Type
Student Residence

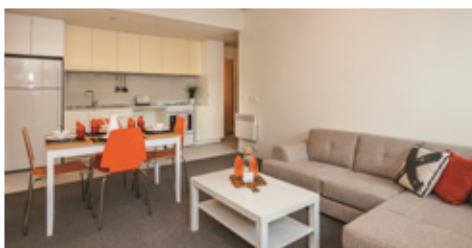
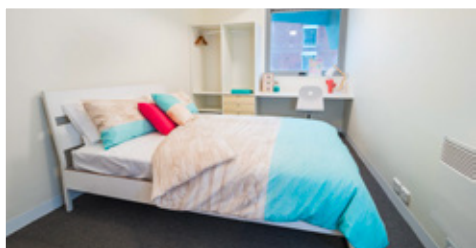


Location
Sydney City (Elizabeth Bay)

Weekly Rates 2023/ week	
Standard Single <i>Jack's Place</i>	\$350
Extra Night <i>Single - Jack's Place</i>	\$65
Deluxe <i>Jack's Place</i>	\$360
Standard Single <i>Yurong</i>	\$360
Extra Night <i>Single - Yurong</i>	\$65

*Security deposit (bond) of 4 weeks rent and \$200 cleaning fee to be paid prior to booking

Campus Living Villages / www.campuslivingvillages.com



Fully-furnished apartments in a modern residential complex, with fully-equipped kitchen and shared bathrooms. Laundry facilities (coin/card operated machines). Wi-Fi included. Bed linen provided. Utility expenses included.
 ·Minimum length of stay: 4 weeks



Type
Shared Apartments



Location
Student Village, University of New South Wales (UNSW)

Weekly Rates 2023/ week	
Standard Single	From: \$350
Extra Night <i>Standard Single</i>	\$65
Studio	From: \$470

*Security deposit (bond) of 4 weeks rent, \$200 cleaning fee and \$50 Key Fob to be paid prior to booking




MELBOURNE

IH Melbourne
 Accommodation 2023



<p>Accommodation Placement Fee: \$350 VIP: \$410</p>	<p>APU/ADO Service: \$200</p>	<p>Payment is due at least 4 weeks prior to student arrival</p>	<p>Living cost in Australia per week: - Groceries and meals: \$200 - Public Transport: \$60</p>
--	--------------------------------------	--	--

HOMESTAY

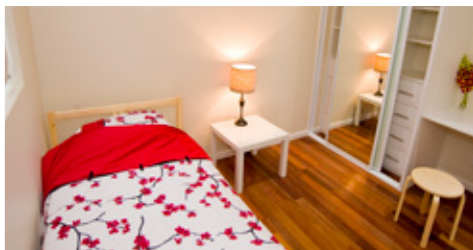
Living with a friendly Australian family is the most popular option. On average, homestay families live about 40 to 60 minutes by public transport from the school. Homestay accommodation includes breakfast & dinner from Monday to Friday, plus lunch on weekends.

·Minimum length of stay: 4 weeks (subject to length of course)
 Contact us for further information: accommodation@ihsydney.com.au
 *VIP rooms include use of a private bathroom (subject to availability)

Weekly Rates 2023/ week	
Standard Single	\$380/ VIP \$490*
Twin Share <i>(Students arriving together)</i>	\$350
Extra Night <i>Standard Single</i>	\$80/ VIP \$100*
Special Diet	\$80

RESIDENTIAL

2Stay / www.2stay.com.au



Modern & fully-furnished houses and apartments with open-plan living area equipped with TV and fully-equipped kitchen as well as shared bathrooms. Laundry facilities (coin-operated machines). Wi-Fi and utilities included. Bed linen included.

·Minimum length of stay: 4 week
 ·Maximum length of stay: 12 weeks
 ·Linen pack: \$90

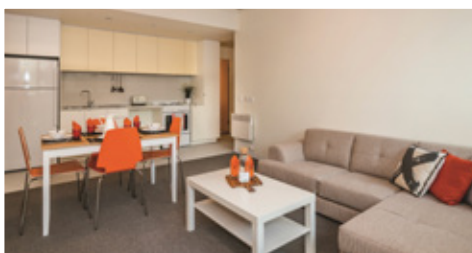
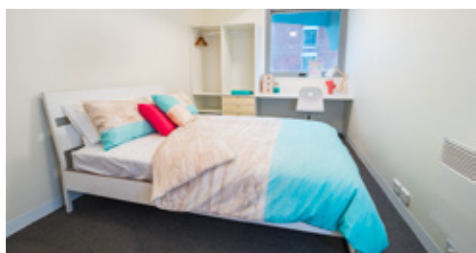
Type
 Shared Apartments & Houses

Location
 Southbank, CBD, Abbotsford, Docklands, South Melbourne; Brunswick East, West Melbourne, South Melbourne

Weekly Rates 2023/ week	
Standard Single	\$395
Twin	\$275
Extra Night <i>Standard Single</i>	\$65

*Security deposit (bond) of 4 weeks rent and \$200 cleaning fee to be paid prior to booking

Campus Living Villages / www.campuslivingvillages.com



Fully furnished apartments in a modern residential complex, with communal kitchen, dining and living areas. Large indoor and outdoor social areas & social events. On-site staff and security. Key fob room access. Shared bathrooms. Laundry facilities (coin/card operated machine). Free Wi-Fi. Bed linen included. Utility expenses included.

·Minimum length of stay: 4 weeks



Type
Shared Apartments

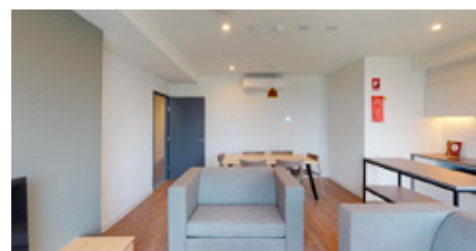
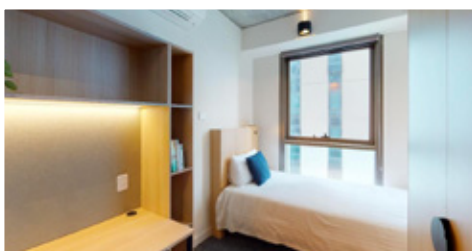


Location
Student Village, The University of Melbourne

Weekly Rates 2023/ week	
Standard Single	From: \$400
Standard Single <i>Extra Night</i>	\$65
Studio	From: \$450

*Security deposit (bond) of 4 weeks rent, \$200 cleaning fee and \$50 Key Fob to be paid prior to booking

UniLodge Melbourne City / www.unilodge.com.au



Purpose-built student accommodation located in Melbourne CBD. Modern share apartments with unlimited Wi-Fi, 24/7 security, air conditioning, communal kitchen and lounge areas. Rooms include fridge, microwave and storage. Large student lounge area available with pool tables, TVs, lounges and social activities. Utilities included, coin-operated laundry onsite. Bed linen and kitchen equipment at additional cost.

·Minimum length of stay: 26 weeks



Type
Shared Apartments



Location
480 Elizabeth St, Melbourne

Weekly Rates 2023/ week	
Standard Single	From: \$430
Standard Single <i>Extra Night</i>	\$65
Studio	From: \$530

*Security deposit (bond) of 4 weeks rent and \$200 cleaning fee to be paid prior to booking





DARWIN

IH Darwin
Accommodation 2023



<p>Accommodation Placement Fee: \$350 VIP: \$410</p> 	<p>APU/ADO Service: \$200</p> 	<p>Payment is due at least 4 weeks prior to student arrival</p> 	<p>Living cost in Australia per week: - Groceries and meals: \$200 - Public Transport: \$60</p> 
---	--	--	--

HOMESTAY

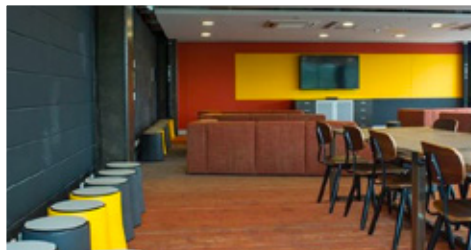
Living with a friendly Australian family is the most popular option. On average, homestay families live about 40 to 60 minutes by public transport from the school. Homestay accommodation includes breakfast & dinner from Monday to Friday, plus lunch on weekends.

·Minimum length of stay: 4 weeks subject to length of course)
Contact us for further information: accommodation@ihsydney.com.au

Weekly Rates 2023/ week	
Standard Single	\$400
Twin Share <i>(Students arriving together)</i>	\$350
Extra Night <i>Standard Single</i>	\$80
Special Diet	\$80

RESIDENTIAL

UniLodge Darwin / www.unilodge.com.au



Purpose-built accommodation located close to shops and public transport. Modern share apartments with Wi-Fi, 24/7 security, air conditioning, communal kitchen and lounge. Rooms include fridge, microwave and storage. Student area with pool tables, TVs and social activities. Utilities included, coin-operated laundry onsite. Bed linen and kitchen items at additional cost.

 **Type**
Student Residence

 **Location**
6 Dripstone Road, Casuarina

Weekly Rates 2023/ week	
Studio	From: \$410
2 Bed apartment	From: \$270
4 Bed apartment	From: \$240

* Long stay of 26 weeks + only

* Security Deposit (Bond) of 4 weeks rent and \$200 cleaning fee to be paid prior to booking



**BYRON
BAY**

IH Byron Bay
 Accommodation 2023



<p>Accommodation Placement Fee: \$350 VIP: \$410</p> 	<p>APU/ADO Service: Brisbane: \$360 Gold Coast: \$210</p> 	<p>Payment is due at least 4 weeks prior to student arrival</p> 	<p>Living cost in Australia per week: - Groceries and meals: \$200 - Public Transport: \$60</p> 
--	--	--	--

HOMESTAY

Living with a friendly Australian family is the most popular option. On average, homestay families live about 40 to 60 minutes by public transport from the school. Homestay accommodation includes breakfast & dinner from Monday to Friday, plus lunch on weekends.

·Minimum length of stay: 4 weeks (subject to length of course)
 Contact us for further information: accommodation@ihsydney.com.au

Weekly Rates 2023/ week	
Standard Single	\$400/ VIP:\$500*
Twin Share <i>(Students arriving together)</i>	\$350
Extra Night <i>Standard Single</i>	\$80/ VIP:\$100*
Special Diet	\$80




RESIDENTIAL

Life in Byron / www.lifeinbyron.com.au



Purpose built student residence with 32 single, twin share and triple share rooms, fully equipped communal kitchen and common room, TV, table tennis, lounges, free Wi-Fi in common spaces & bedrooms and coin-operated laundry. Bed linen included.
 ·Minimum length of stay: 4 weeks

*Security deposit (bond) of 4 weeks rent and \$200 cleaning fee to be paid prior to booking

-  **Type**
Student Residence
-  **Location**
58 Tennyson Street, Byron Bay
-  10 minutes to ih Byron Bay

Weekly Rates 2023/ week	
Standard Single	\$360
Double Room	\$400
Twin Share	\$280
Triple	\$250
Queen room	\$500
Extra Night <i>Standard Single</i>	\$50
Extra Night <i>Double Room</i>	\$70

The Surf House / www.thesurfhouse.com.au



Located 50 metres from the beach, this relaxed 'surf inspired' accommodation combines convenience with modern comforts, including in room air-conditioning, free high speed Wi-Fi, on-site laundry, communal kitchen, work spaces, 24/7 reception & flexible check in, luggage storage, pool table, complimentary surfboard hire and a rooftop café bar. Private and shared rooms, including female-only rooms available. Linen provided.
 ·Minimum length of stay: 4 weeks



Type
Guest House



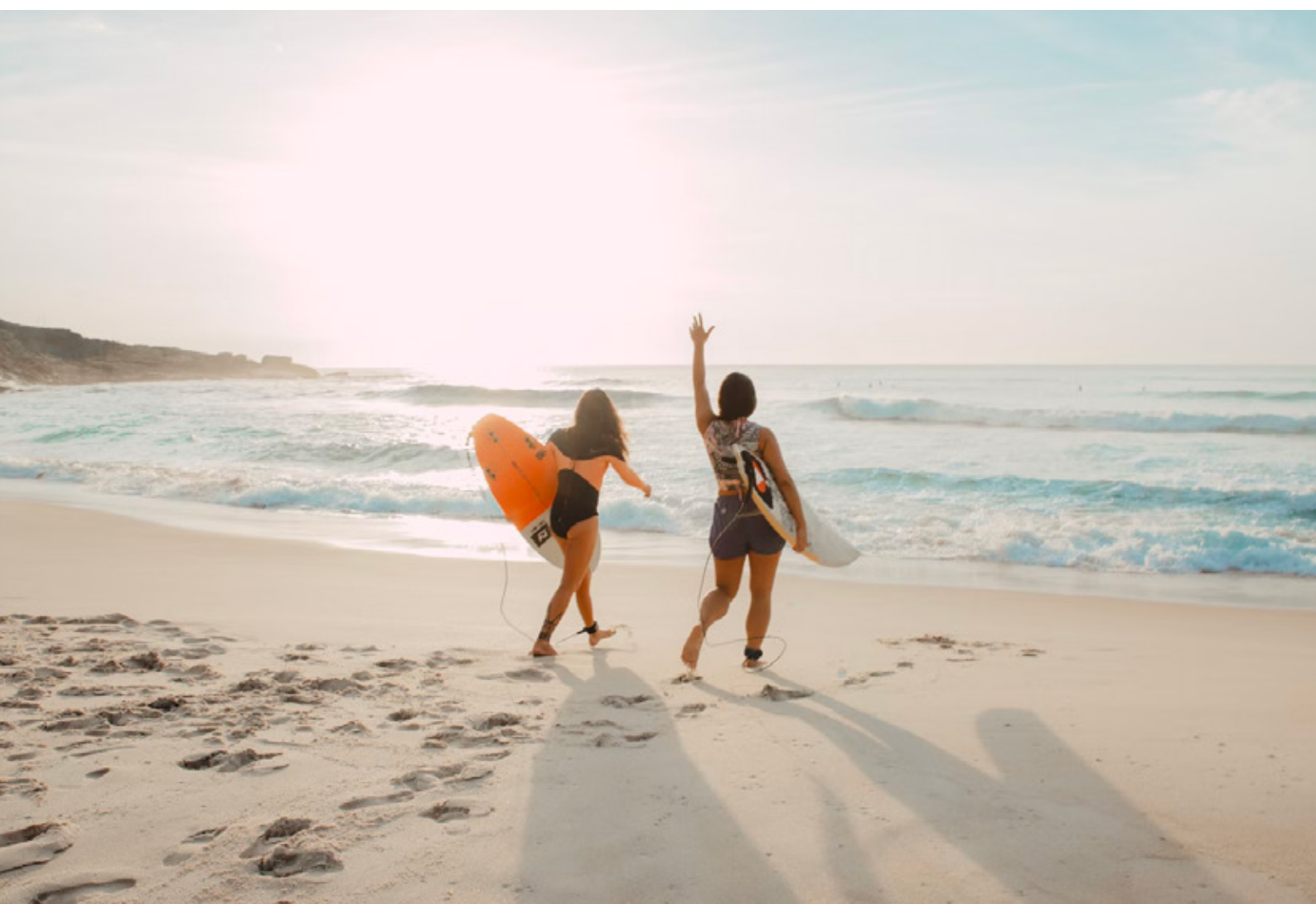
Location
23 Lawson Street, Byron Bay



8 minutes to ih Byron Bay

Weekly Rates 2023/ week	
4 bed Dorm <i>Per Person</i>	From: \$370
4 bed Dorm <i>Female - Per Person</i>	From: \$390
Twin room <i>Per Person</i>	From: \$1,150
Double Room <i>Per Person</i>	From: \$1,150
Queen Ensuite <i>Per Person</i>	From: \$1,550

*Security deposit (bond) of 4 weeks rent and \$200 cleaning fee to be paid prior to booking





ADELAIDE

IH Adelaide
 Accommodation 2023



<p>Accommodation Placement Fee: \$350 VIP: \$410</p> 	<p>APU/ADO Service: \$200</p> 	<p>Payment is due at least 4 weeks prior to student arrival</p> 	<p>Living cost in Australia per week: - Groceries and meals: \$200 - Public Transport: \$60</p> 
--	--	--	--

HOMESTAY

Living with a friendly Australian family is the most popular option. On average, homestay families live 30 to 50 minutes (by public transport) from the school. Homestay accommodation includes breakfast & dinner from Monday to Friday, plus lunch on weekends. Wi-Fi is included.

·Minimum length of stay: 4 weeks (subject to length of course)
 Contact us for further information: accommodation@ihsydney.com.au
 *VIP rooms include use of a private bathroom (subject to availability)

Weekly Rates 2023/ week	
Standard Single	\$380/ VIP \$490*
Twin Share <i>(Students arriving together)</i>	\$350
Extra Night <i>Standard Single</i>	\$80/ VIP \$100
Special Diet	\$80

RESIDENTIAL


Unilodge City Gardens / www.unilodge.com.au



Studios are perfect for students who prefer living in their own space. Each room is equipped with all the premium amenities required for comfortable living: A King Single Bed, a private en suite, functional kitchenette with a full-size fridge, cook top, convection microwave and study desk and chair.
 ·Minimum length of stay: 6 months, for 4 weeks special request please check with accommodation team.

 **Type**
 Shared Apartments & Houses

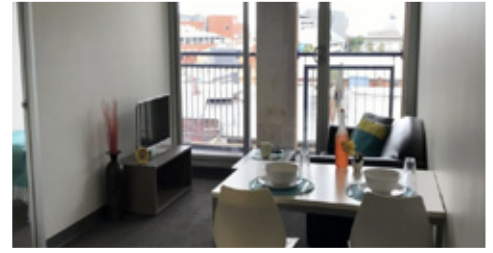
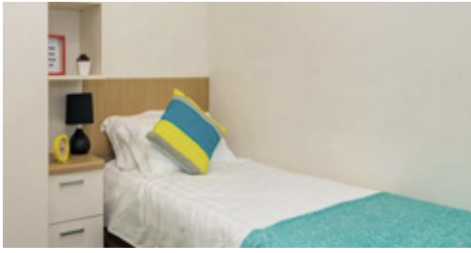
 **Location**
 City Gardens

 **What do you need?**
 own personal items such as bedding, bath ware, kitchenware etc

Weekly Rates 2023/ week	
2 Bed Apartment	From: \$350
6 Bed Apartment	From: \$300
Studio	From: \$400

*Security deposit (bond) of 4 weeks rent and \$200 cleaning fee to be paid prior to booking

Unilodge Metro / www.unilodge.com.au



Fully furnished apartment includes a bed, desk and study chair, sofa, coffee table, dining table and chair, TV, built in robes, heater/air conditioning and kitchenette with stove top, microwave, fridge and sink.

·Minimum length of stay: 6 months



Type
Shared Apartments



Location
CBD

Weekly Rates 2023/ week

1 Bed Apartment	From: \$340
2 Bed Apartment	From: \$250

*Security deposit (bond) of 4 weeks rent and \$200 cleaning fee to be paid prior to booking





IH Gold Coast Accommodation 2023



Accommodation Placement Fee: \$350
 VIP: \$410



APU/ADO Service: \$200



Payment is due at least 4 weeks prior to student arrival



Living cost in Australia per week:
 - Groceries and meals: \$200
 - Public Transport: \$60



HOMESTAY

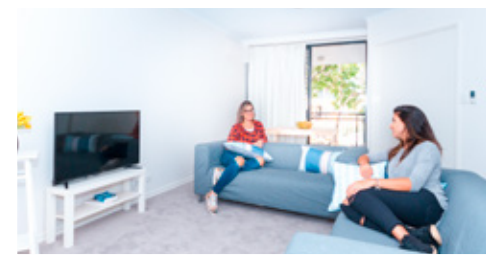
Living with a friendly Australian family is the most popular option. On average, homestay families live 30 to 50 minutes (by public transport) from the school. Homestay accommodation includes breakfast & dinner from Monday to Friday, plus lunch on weekends. Wi-Fi is included.

·Minimum length of stay: 4 weeks (subject to length of course)
 Contact us for further information: accommodation@ihsydney.com.au
 *VIP rooms include use of a private bathroom (subject to availability)

Weekly Rates 2023/ week	
Standard Single	\$380/ VIP \$490*
Twin Share <i>(Students arriving together)</i>	\$350
Extra Night <i>Standard Single</i>	\$80/ VIP \$100*
Special Diet	\$80

RESIDENTIAL

2Stay / www.2stay.com.au



Modern & fully-furnished, open-plan living area with TV & fully-equipped kitchen, shared bathrooms, Wi-Fi & utilities included, coin/card operated laundry, bed linen included.
 ·Minimum length of stay: 4 weeks
 ·Maximum length of stay: 12 weeks
 ·Linen pack: \$90

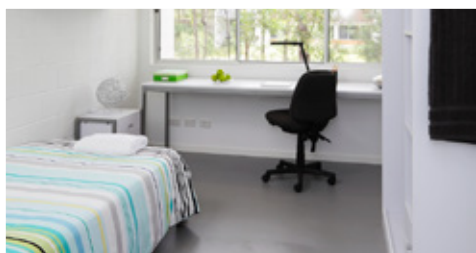
Type
 Shared Apartments & Houses

Location
 Southport, Surfer's Paradise

Weekly Rates 2023/ week	
Standard Single	\$395
Extra Night <i>Standard Single</i>	\$65
Twin	\$275

*Security deposit (bond) of 4 weeks rent, \$200 cleaning fee and \$50 Key Fob to be paid prior to booking

Campus Living Villages / www.campuslivingvillages.com



Modern & fully-furnished, communal kitchen, dining and living areas, shared bathrooms, Wi-Fi & utilities included, coin-operated laundry, bed linen included, on-site staff & security, key fob room access, large indoor & outdoor social areas & social events.
 ·Minimum length of stay: 4 weeks

 **Type**
 Shared Apartments

 **Location**
 Griffith University Village, Southport

Weekly Rates 2023/ week	
Standard Single	From: \$310
Studio	From: \$380

*Security deposit (bond) of 4 weeks rent, \$200 cleaning fee and \$50 Key Fob to be paid prior to booking

Health and wellbeing tips to stay COVID safe.

Please follow the government and accommodation provider's current guidelines at any time by keeping up to date.



www.nsw.gov.au/covid-19/stay-safe



www.coronavirus.vic.gov.au/staying-safe



www.qld.gov.au/health/conditions/health-alerts/coronavirus-covid-19



www.coronavirus.nt.gov.au



www.facebook.com/sahealth

Choose the location that suits you WE'VE GOT AUSTRALIA COVERED!



IH Sydney City



IH Bondi



IH Darwin



IH Melbourne



IH Gold Coast



IH Byron Bay



IH Adelaide

HOMESTAY



- **Min length of stay:** 4 weeks – Provider can make an exception for short stay if student’s course is under 4 weeks
- **Arrival time:** please keep in mind the arrival time to the homestay should be a reasonable hour that would suit a family environment
- **Late check out:** one extra night fee will be applied if the student is expecting lunch and/or dinner on departure date
- **To apply for a twin room:** two students must arrive together
- **Special requests:** must be on the application form. Please note we cannot guarantee the request, however, our providers will do their best to accommodate)
- **Allergies:** must be on the application form – If we are notified two weeks or less before arrival – a fee may apply
- **Late booking request:** any booking that is requested 2 weeks or less before the check in date will incur a \$250 fee
- Confirmation of accommodation placement will be sent one week before check-in

RESIDENTAL



- **Min length of stay:** 4 weeks (subject to minimum weeks per provider in the terms based on season and availability i.e Unilodge)
- **Max length of stay:** 12 weeks
- **If the student does not specify the provider:** we will book with 2stay. To secure the booking we need payment and flight tickets at least 4 weeks before check-in
- If the student requests any provider other than 2stay, we will need to check availability. If there is availability - payment must be made within 5 business days to guarantee the spot
- **If a student requests a twin room:** the student will be placed with another student who will be applying for a twin room with that provider
- **Late booking request:** any booking that is requested 2 weeks or less before the check in date will incur a \$250 fee
- Confirmation of accommodation placement will be sent one week before check-in

Terms & Conditions for all options:

- * Prices are subject to change and accommodation is subject to availability
- * Payment is due at least 4 weeks prior to student arrival
- * Placement confirmation sent after receipt of full payment and confirmation of arrival flight details
- * Cancellation fees apply and are subject to provider policies
- * Extra fee may apply for late checkout
- * Prices may vary if a special diet is required
- * We only arrange accommodation for IH/ihBC students



Contact us for further information: accommodation@ihSydney.com.au



International House

Sydney City | Bondi | Darwin | Melbourne
Gold Coast | Byron Bay | Adelaide



Business College at ih



IH Sydney Training Services Pty Ltd
CRICOS Provider: 02623G
RTO Number: 91109

#livetheadream

| (+61 2) 9279 0733

@ | info@ihsydney.com.au

| www.ihsydney.com.au / www.ihbc.edu.au



Follow us: @ihsydney @ihbcnow



Scan or click to see all our locations around Australia!

