



Career success starts here.

University pathways for international students 2024–25



INTO 
CITY, UNIVERSITY
OF LONDON

London's most career-intensive pathway

Career success starts at INTO City, University of London. Study a pathway programme that nurtures fiercely ambitious students in a global city, with opportunities to develop your career from day one.

You'll begin at our international study centre in the heart of London, the UK's cosmopolitan capital. Then, join students from 160+ nationalities and progress to an inspiring degree that will push you to become your best.

What are you waiting for?
The future is in your hands.

Top 70

A world top 70* business school with triple-crown accreditation

Bayes Business School (formerly Cass) is an established institution with a new name, reflecting City's inclusive values.

World top 25

for international student percentage**



Best

Build your future in the world's best student city†

Study in 'the City' of London, with endless professional opportunities on your doorstep.

Tailored

The only tailored pathway to City with embedded career support

Prepare for career success with our extensive employability programme.

“You are about to embark on a journey that will change your life, studying at a career-focused university in the best city in the world. We will be with you every step of the way, with courses uniquely designed to prepare you to succeed at City, and employability built in from day one. Welcome to City, University of London, and to INTO City.”

Adelina Melillo
Centre Director, INTO City, University of London

* QS World University Rankings by Subject 2023
** Times Higher Education International Student Rank 2023
† QS Best Student Cities 2023



Where leaders learn

Follow in the footsteps of CEOs, innovators and global leaders at City, University of London. With pathway programmes leading to a success-focused university, INTO City offers a guaranteed route to a bright future.

The City Law School, formerly Inns of Court School of Law, has a long list of prestigious alumni including:

Mahatma Gandhi
Indian lawyer and political ethicist

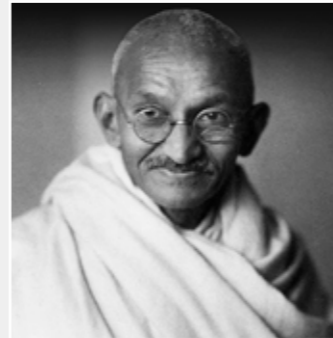


Image: Wikimedia Commons

Muhammad Ali Jinnah
Former Governor-General of Pakistan

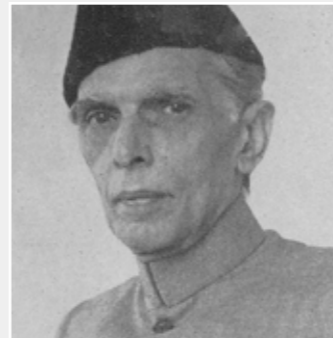


Image: Photographer unknown

Margaret Thatcher
The UK's first female Prime Minister



Image: Reuters

Jawaharlal Nehru
Former Prime Minister of the Republic of India



Image: Bachrach/Getty Images



“I chose to do a year-long placement programme between Year 2 and 3 of my degree. It helped me get a summer internship at BlackRock, the world’s largest asset manager, after which I secured a graduate role.”

Sabina, Kyrgyzstan
Private Credit Associate at BlackRock

- International Foundation
- BSc (Hons) Banking and International Finance



“It was my childhood dream to study in London and become a lawyer. My goal was to get a training contract before graduation, and I did. All this hard work, studying and preparation paid off.”

Kseniia, Russia
Associate at Ashurst LLP

- International Foundation
- LLB (Hons) Law



“I’m currently working in the direct trading team in the oil swaps market for a leading market maker in London. London is the centre of financial markets and it’s got one of the best education systems – so straight away I decided if I wanted to study abroad, it would definitely be in the UK, in London and at City. And I did that.”

Maggie, China
Oil Swaps Direct Trader at Onyx Commodities

- International Foundation
- BSc (Hons) Economics



Watch a video about Maggie



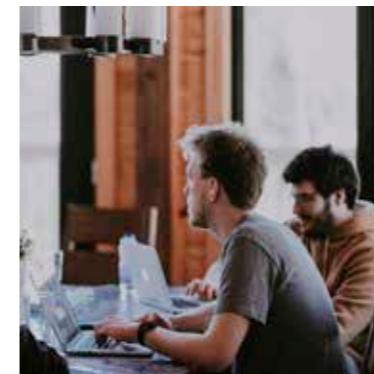
Enhancing your employability

Best graduate salaries in the UK

Bayes Business School graduates earn more on average after 5 years than those from any other UK university* – including Oxford and Cambridge.

* Adzuna 2022

Get ready for career success with our extensive employability programme. From day one, we'll help you develop the real-world skills employers want – with endless opportunities to build your professional network.



At INTO City, University of London

Your INTO pathway isn't just a route to a City, University of London degree – you'll also develop key career skills, gain real-world experience and improve your employability before university:

- **Embedded employability** – develop skills as you study, such as communication, teamwork, presentation, problem solving and time management.
- **Career workshops** – attend expert-led workshops such as talks from employers and entrepreneurial challenges.
- **Real-world assessments** – complete assessment tasks related to your degree subject and future career.
- **Networking** – join our online community to find out about employability events and connect with other students in your field.
- **Student Ambassador scheme** – gain experience by representing INTO in the community, sharing your story and assisting the marketing team.

Guaranteed virtual internship*

- A guaranteed internship that aligns with your interests and goals.
- A choice of popular career fields and industries.
- Flexible, remote working with a range of options to suit you.

*Additional costs apply

Find out more at:
intostudy.com/city-employability



“Students from INTO City already have an advantage over many overseas students who join our programmes directly. Being a step ahead academically can be matched by being a step ahead in the search for an attractive job, now that embedded employability skills are going to be available.”

Dr Russell Gerrard
Head of the Faculty of Actuarial Science and Insurance, Bayes Business School

At City, University of London

Unlock your potential at City, University of London. While you study your degree, you'll have access to a wide range of career-enhancing services and opportunities:

- **Academics with real-world industry experience** – learn from professionals in your chosen field.
- **Links with local, national and international companies.**
- **Employability modules embedded in course content.**
- **Award-winning professional mentoring programme** – a six-month scheme to help eligible students become highly employable graduates.
- **Entrepreneurship funding from CityVentures and the City Launch Lab.**

Career activation

City is one of the first UK universities to make career development and professional experience mandatory for undergraduate students. The initiative includes:

- **Career activation module** – develop the skills you need to stand out in the competitive job application process.
- **One-year paid placements on most undergraduate degrees** – previous students have worked at Goldman Sachs, Deloitte, Warner Bros and PriceWaterhouseCoopers.
- **4-week micro-placements** – credit-bearing placement modules available for some undergraduate subjects.

After graduation

Step into the world of work with confidence. City, University of London offers you expert support as you find a graduate job, including:

- **CV, job application and assessment centre practice** – learn essential skills for the job-hunting process.
- **City CareersHub** – a job search platform for City students and recent graduates with 5,000+ registered employers.

Studying at City, University of London

University is a journey to the future led by your interests, ambitions and values. For 125+ years, City has transformed passions into careers through exceptional education informed by world-class research and enterprise.

Business

Your tailored route to an elite business school in a global financial centre.

- Top 6 in the UK* and top 70** in the world for business education.
- 90% of graduates in work secured a professional role within 15 months†.
- Bayes is part of an elite group of business schools with Triple-Crown accreditation.
- 5,000+ industry links with paid placement opportunities for all undergraduate students.

Business facilities include:

- Financial Resources Suite with Bloomberg, Thomson Reuters and Morningstar Direct terminals.
- Bloomberg and Thomson Reuters dealing rooms.
- City Launch Lab – an accelerator programme for student and graduate entrepreneurs.

Computer science

City has been leading in computer science education for 60+ years, providing some of the UK's first computer science degrees.

- Located near 'Tech City' and the UK headquarters of Google, Amazon and Microsoft.
- Previous placement opportunities have included IBM, PlayStation, Disney, Microsoft and Goldman Sachs.
- Accredited degrees mean you'll graduate with industry recognised qualifications.

Computer science facilities include:

- High-spec computer laboratory with industry-standard software.
- Virtual hacking laboratory.
- City Interaction Lab for testing websites, apps, smart TVs and more.
- Virtual reality kits.

Law

Become part of a prestigious community at The City Law School – where leaders learn law.

- Top 75 in the world for Law††.
- Legal education dating back to 1852 as Inns of Court School of Law.
- Brand new £63 million Law School building.
- Located in central London, close to major law firms, courts and tribunals.
- Alumni include world leaders, judges and other top legal professionals.

Law facilities include:

- Mock court room for simulated court proceedings.
- In-house legal clinic where students give legal advice to the community.
- State-of-the-art law library.



Watch Ngan's story



"At City, I looked for the ranking and the environment. They have good reputations in business, and it's a really good place to start your education. If you want to start up a business, then you can come to CityVentures and they will help transform your business idea into a real enterprise."

Ngan, Vietnam
International Foundation

BSc (Hons) Business Management, Digital Innovation and Entrepreneurship



Watch Bedour's story





"I've always wanted to become a solicitor to find justice. When doing my research, I found that City is one of the top universities in central London. The law building here is very modern and open. There's a law library that's very calm and quiet, so I take my time here – studying peacefully without any disruptions."


Bedour, Qatar
International Foundation


LLB (Hons) Law


All INTO and City, University of London students also have access to:

 All university libraries and study spaces

 Guest lectures delivered by City's academics

 Clubs and societies run by City Students' Union

 A wide range of services including student support and careers advice

 CitySport, central London's largest student sports facility

* Financial Times European Business School Ranking 2022
** QS World University Rankings by Subject 2023

† Graduate Outcomes 2019/20
†† Times Higher Education World University Rankings by Subject 2023



Life at the Centre

Get to know our vibrant INTO Study Centre. It's where you'll learn, be supported and make friends for life – all in one of the coolest parts of central London. Join our welcoming community of international students, teachers and student support experts. Whatever you need, you'll find it at the centre.

92%
student satisfaction
for all aspects of the
INTO Centre

(INTO Annual Student Experience Survey 2023)



“What I valued most at INTO was the feeling of unity, where everyone was ready to help you at any time.”

Elene, Georgia

- International Foundation
- BSc (Hons) Banking and International Finance

Expert student support

Throughout your time at the centre, you'll have access to a range of services and tailored support including:

- help opening a bank account and registering with a doctor
- visa and immigration support services
- one-on-one support from the university's Progression Officer
- dedicated personal tutor
- orientation programmes, day trips and celebrations
- additional support for students under 18.

Accommodation

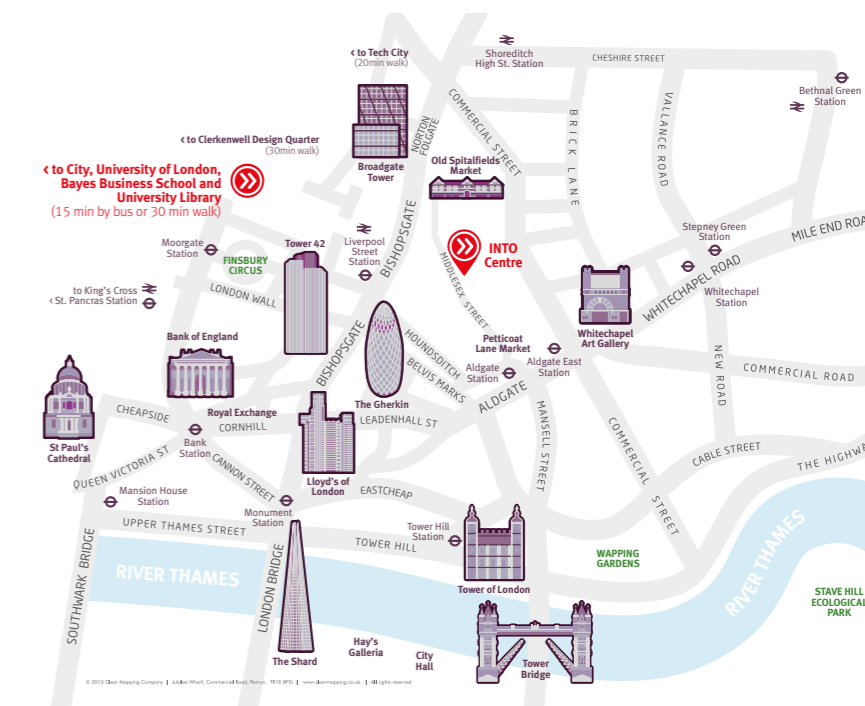
Get ready to live and study with London's world-class culture, art, shopping and global food on your doorstep. You can choose from a variety of options depending on your needs and preferences. Whatever you want from your university accommodation, our knowledgeable team are here to help you make the right choice.

For full details of our accommodation options, visit:
www.intostudy.com/city/accommodation

INTO Centre facilities

Inside the centre, you'll find:

- the Learning Resource Centre with books and study materials
- the Welcome Desk for any questions or support
- digitally enhanced classrooms
- the IT hub for help with technical issues
- the INTO Cafe, serving a selection of hot drinks and snacks
- spaces for studying, socialising and group work.



Discover the City of London

Ignite your creativity. Embrace opportunity. Become part of something bigger in this 24-hour city. Diverse, cosmopolitan and endlessly exhilarating, there's a reason why London attracts more international students than anywhere else in the UK.

Careers in the City

Immerse yourself in professional life. The City combines the best of culture, skill and innovation – with easy access to Tech City and the Knowledge Quarter, a focal point for research and resources of every kind. Whatever your industry, opportunity will find you here.

Explore London

Make the most of everything London has to offer. Both INTO City and the university campus have excellent train, bus and underground links, so you can discover:

- delicious global food at Spitalfields Market, Camden Market, Brick Lane and Petticoat Lane
- vintage clothes and cool coffee shops in Shoreditch, London's creative district
- famous museums and landmarks including the Tate Modern, Buckingham Palace and Tower Bridge
- world-class plays and musicals in the West End
- sporting events at Wimbledon and Wembley Stadium
- connections to the rest of England and beyond.

“As the "capital of capitals", London continues to reign as the planet's best city for the seventh year running.”

(Resonance Consultancy Annual Best Student Cities Report 2023)

How much does it cost to live in London?

Transport (single journey)	£1.75+
Taxi from the airport	£70
Eating out (inexpensive meal)	£18
Weekly grocery shop	£44
Cappuccino	£3.50
Cinema ticket	£12
University accommodation	From £231

(Costs are estimates and provided for illustrative purposes only. Sources include Numbeo.com 2023)

Find out how an INTO City student makes their money go further:



Best city in the UK

for job satisfaction

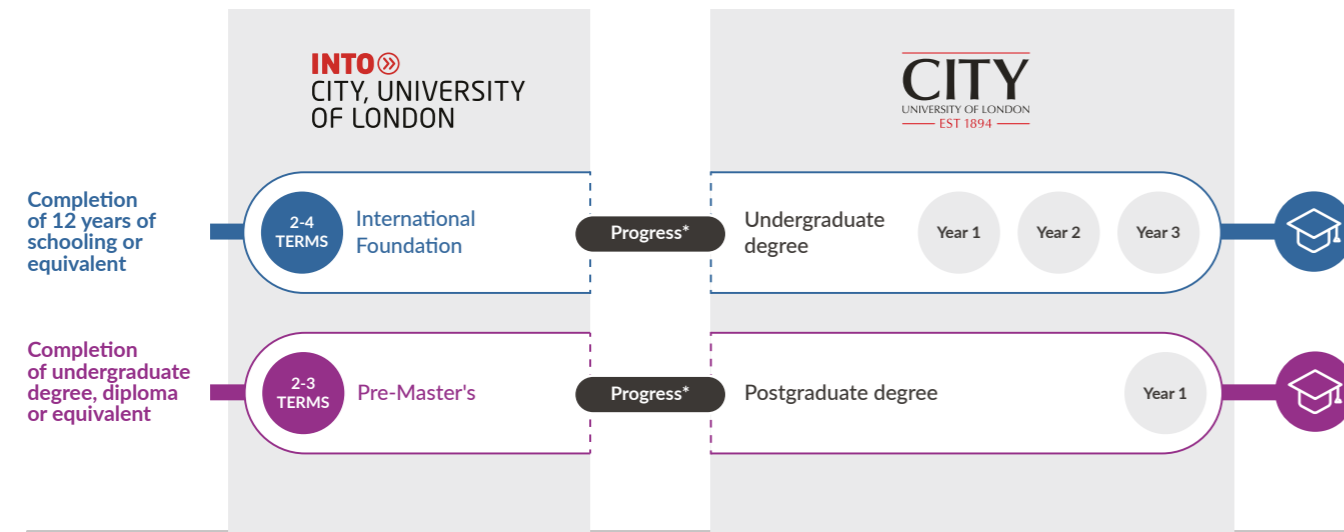
(Glassdoor Job Ratings by Region 2022)



Choosing your course

Prepare for your university degree with our academic courses, available in a range of subject pathways designed in partnership with City, University of London. This is what your study journey could look like.

Academic courses



* subject to meeting progression requirements

English language courses

Improve your English level fast with tailored, personalised support.

Online Academic English

- A convenient online course offering rapid progress of 0.5 to 1.0 IELTS points per term.
- More than language learning – develop the academic skills needed for successful UK study.
- Flexible start dates from January to September.

For more information, visit:
intostudy.com/city/ae

Pre-sessional English

- For City, University of London offer holders. Improve your English language skills to the level required for your degree. Start dates in July and August.

For more information, visit:
intostudy.com/city/pse

Please note that course length and start month options may vary depending on the pathway chosen. Please visit intostudy.com/city/courses for full information.

International Foundation

Don't meet the English requirements? Choose from a standalone Academic English course or combine English with an academic plan to improve your IELTS score fast.

16 years and above

3-term: Sep or Jan
 4-term: Sep

3-term: IELTS 5.5
 (with a minimum of 5.0 in writing) or equivalent.
 4-term: IELTS 5.0
 (with a minimum of 4.5 in writing) or equivalent

2-term: Mar
 3-term: Sep or Jan
 4-term: Sep

2-term: IELTS 6.0
 (with a minimum of 5.5 in writing) or equivalent.
 3-term: IELTS 5.5
 (with a minimum of 5.0 in writing) or equivalent.
 4-term: IELTS 5.0
 (with a minimum of 4.5 in writing) or equivalent

Age requirement
 Start dates
 English requirements

Improve your subject knowledge and English language skills to the level you need to begin Year 1 of an undergraduate degree at City, University of London.

Actuarial Science - FAS

Choose from
 9 degrees.



Secure your place on England's longest-running Actuarial Science degree, ranked 2nd in the world*. Learn to assess risk management in the financial sector at City's triple-accredited Bayes Business School.

What will I study?

- Academic English and Study Skills (40 credits)
- Advanced Mathematics and Statistics (20 credits)
- Economics (20 credits)
- Foundation Computing (20 credits)
- Mathematics for Science and Computing (20 credits)

You'll need to earn 120 credits from all module options.

Business and Economics with Accounting - FBEA

Choose from
 13 degrees.



Your purpose-built route to a world top 70** business school. Follow in the footsteps of global CEOs, entrepreneurs and business founders, with career-building opportunities from day one.

What will I study?

- Academic English and Study Skills (40 credits)
- Economics (20 credits)
- Foundation Mathematics (20 credits) or Foundation Mathematics for Economics (20 credits)[†]
- Introduction to Accounting (20 credits)
- Introduction to the Study of Business (20 credits)

You'll need to earn 120 credits from all module options.

Scan the QR codes or visit intostudy.com/city/courses to find out more about each programme, including a full list of progression options.

* UNL Global Research Rankings of Actuarial Science and Risk Management & Insurance 2023
 ** QS World University Rankings by Subject 2023
[†] Compulsory for students intending to study Financial Economics

16 years and above

3-term: Sep or Jan
4-term: Sep

3-term: IELTS 5.0
(with a minimum of 5.0 in writing and 4.5 in all other subskills) or equivalent.
4-term: IELTS 4.5
(with a minimum of 4.5 in writing and 4.0 in all other subskills) or equivalent.

3-term: Sep or Jan
4-term: Sep

3-term: IELTS 5.5
(with a minimum of 5.0 in writing) or equivalent.
4-term: IELTS 5.0
(with a minimum of 4.5 in writing) or equivalent.

Age requirement
Start dates
English requirements

Improve your subject knowledge and English language skills to the level you need to begin Year 1 of an undergraduate degree at City, University of London.

Computing, Science and Engineering – FCSE

Choose from 20 degrees.



Prepare to study a career-focused computer science or engineering degree informed by 125+ years of excellence. Experiment in state-of-the-art laboratories and develop practical, future-proof skills.

What will I study?

You'll study all of these core modules:

Academic English and Study Skills (40 credits)
Mathematics for Science and Computing (20 credits)
Advanced Mathematics and Statistics (20 credits)

Plus two specialist modules:

Computer Science route

Foundation Computing (20 credits)
Information Systems and Technology (20 credits)

Engineering route

Physics (20 credits)
Engineering Science (20 credits)

You'll need to earn 120 credits from all module options.

Humanities and Law – FHL

Choose from 18 degrees.



Want to study law in London? This programme leads to City's pioneering law school – as well as the UK's best journalism* and media** degrees.

What will I study?

Academic English and Study Skills (40 credits)
Foundation in English Law (20 credits)
International Studies (20 credits)
Quantitative Methods (20 credits)
Society and Culture (20 credits)

You'll need to earn 120 credits from all module options.

Scan the QR codes or visit intostudy.com/city/courses to find out more about each programme, including a full list of progression options.

* Guardian University Guide 2023
** The Complete University Guide 2023

Once you've successfully completed your International Foundation programme, we'll help you choose your City, University of London degree. Depending on your pathway, you could study:

Degree	Pathway(s)	Specific requirements	English level	Final grade
Actuarial Science BSc (Hons)	FAS or FCSE	70% in Maths and 65% in all other modules	65% with a minimum of 60% in all subskills	70%
Data Analytics and Actuarial Science BSc (Hons)	FAS or FCSE	75% in Maths and 65% in all other modules	65% with a minimum of 60% in all subskills	70%
Finance with Actuarial Science BSc (Hons)	FAS or FCSE	75% in Maths and 65% in all other modules	65% with a minimum of 60% in all subskills	70%
Mathematics and Finance BSc (Hons)	FAS or FCSE	65% in Mathematics for Science and Computing	60%	60%
Mathematics BSc (Hons)	FAS or FCSE	65% in Mathematics for Science and Computing	60%	60%
Mathematics with Data Science BSc (Hons)	FAS or FCSE	65% in Mathematics for Science and Computing	60%	60%
Mathematics with Data Science MSci	FAS or FCSE	65% in Mathematics for Science and Computing	60%	60%
Mathematics with Finance and Economics BSc (Hons)	FAS or FCSE	65% in Mathematics for Science and Computing	60%	60%
Accounting and Finance BSc (Hons)	FBEA	70% in Maths and 65% in all other modules	65% with a minimum of 60% in any subskill	70%
Banking and International Finance BSc (Hons)	FBEA	65% in all modules	65% with a minimum of 60% in any subskill	70%
Business Management BSc (Hons)	FBEA	65% in all modules	65% with a minimum of 60% in any subskill	70%
Business Management with Social Purpose BSc (Hons)	FBEA	65% in all modules	65% with a minimum of 60% in any subskill	70%
Business Management, Digital Innovation and Entrepreneurship BSc (Hons)	FBEA	65% in all modules	65% with a minimum of 60% in any subskill	70%
Business with Finance BSc (Hons)	FBEA	65% in all modules	65% with a minimum of 60% in any subskill	70%
Business with Marketing BSc (Hons)	FBEA	65% in all modules	65% with a minimum of 60% in any subskill	70%
Economics BSc (Hons)	FBEA	70% in Foundation Maths OR Foundation Maths for Economics	65%	60%
Economics with Accounting BSc (Hons)	FBEA	70% in Foundation Maths OR Foundation Maths for Economics	65%	60%
Finance BSc (Hons)	FBEA	65% in all modules	65% with a minimum of 60% in any subskill	70%
Financial Economics BSc (Hons)	FBEA	70% in Foundation Maths OR Foundation Maths for Economics	65%	60%
International Business BSc (Hons)	FBEA	65% in all modules	65% with a minimum of 60% in any subskill	70%
Investment and Financial Risk Management BSc (Hons)	FBEA	65% in all modules	65% with a minimum of 60% in any subskill	70%
Aerospace Engineering BEng (Hons)*	FCSE	65% in Mathematics for Science and Computing	60% with a minimum of 60% in writing	60%
Biomedical and Healthcare Engineering BEng (Hons)*	FCSE		60%	60%
Civil and Infrastructure Engineering BEng (Hons)*	FCSE	65% in Mathematics for Science and Computing	60%	60%
Computer Science BSc (Hons)	FCSE	65% in Mathematics for Science and Computing and 50% in Foundation Computing	60%	60%
Computer Science MSci	FCSE	65% in Mathematics for Science and Computing and 50% in Foundation Computing	60%	60%
Computer Science with Cyber Security MSci	FCSE	65% in Mathematics for Science and Computing and 50% in Foundation Computing	60%	60%
Computer Science with Games Technology BSc (Hons)	FCSE	65% in Mathematics for Science and Computing and 50% in Foundation Computing	60%	60%
Computer Science with Games Technology MSci	FCSE	65% in Mathematics for Science and Computing and 50% in Foundation Computing	60%	60%
Data Science MSci	FCSE	65% in Mathematics for Science and Computing and 50% in Foundation Computing	60%	60%
Energy and Sustainability Engineering BEng (Hons)*	FCSE	65% in Mathematics for Science and Computing	60%	60%
Engineering Systems BEng (Hons)*	FCSE	65% in Mathematics for Science and Computing	60%	60%
Engineering with Business BEng (Hons)*	FCSE	65% in Mathematics for Science and Computing	60%	60%
Mechanical and Design Engineering BEng (Hons)*	FCSE	65% in Mathematics for Science and Computing	60%	60%
Music, Sound and Technology BSc (Hons)	FCSE	Successful completion of all modules	65% with a minimum of 60% in all subskills	60%
Communication, PR and Advertising BA (Hons)	FHL	Successful completion of all modules	65%	60%
Media and Communications BA (Hons)	FHL	Successful completion of all modules	65%	60%
Media Production BA (Hons)	FHL	Successful completion of all modules	65%	60%
Music Performance with Production BA (Hons)	FHL		65% with a minimum of 60% in all subskills	60%
International Political Economy BSc (Hons)	FHL	Successful completion of all modules	65%	60%
International Politics and Sociology BSc (Hons)	FHL	Successful completion of all modules	65%	60%
Journalism BA (Hons)	FHL		70%	75%
Law LLB (Hons)	FHL	Successful completion of all modules	65%	65%
Psychology BSc (Hons)	FHL	Successful completion of all modules	65%	60%
Psychology with Criminology BSc (Hons)	FHL	Successful completion of all modules	65%	60%
Sociology with Psychology BSc (Hons)	FHL	Successful completion of all modules	65%	60%
Sociology BSc (Hons)	FHL	Successful completion of all modules	65%	60%

Scan the QR codes or visit intostudy.com/city/courses to find out more about each programme, including a full list of progression options.

* MEng options with placements are available for all BEng options.
 Degree option with a work placement also available

Please note: English level and academic progression requirements are correct to the best of our knowledge at the time of going to print. In some circumstances these may change throughout the year – please visit www.intostudy.com/city for the most up to date information. Progression requirements, including English level and final grade, may be higher for degrees with a year in industry, year abroad/overseas placement, and with an integrated Master's.



2-term: Jan or Mar
3-term: Sep or Jan



2-term: IELTS 6.0
(with a minimum of 5.5 in all subskills) or equivalent.
3-term: IELTS 5.5
(with a minimum of 5.0 in all subskills) or equivalent.

Improve your subject knowledge and English language skills to the level you need to begin a postgraduate degree at City, University of London.

Computing, Science and Engineering – PMCSE

Choose from 14 degrees.



Develop the skills you need to join City's leading School of Science & Technology. Choose a future-focused subject such as cyber security, data science or a combined engineering and management degree.

What will I study?

You'll study all of these core modules:

- English Language and Study Skills (30 credits)
- Research Skills (30 credits)
- Project Management (20 credits)

Plus one specialist module:

- Computer Science route**
Introduction to Computing and Information Systems (40 credits)
- Engineering route**
Introduction to Science and Engineering (40 credits)

You'll need to earn 120 credits from all module options.



2-term: Jan or Mar
3-term: Sep or Jan



2-term: IELTS 6.0
(with a minimum of 5.5 in all subskills) or equivalent.
3-term: IELTS 5.5
(with a minimum of 5.0 in all subskills) or equivalent.

Economics and Social Sciences – PMESS

Choose from 22 degrees.



Get ready to study at one of three Schools at City: Communication & Creativity, Policy & Global Affairs or Health & Psychological Sciences. Develop essential study and research skills in preparation for your dissertation.

What will I study?

You'll study all of these core modules:

- English Language and Study Skills (30 credits)
- Research Skills (30 credits)

Plus two specialist modules:

- Economics route**
Introduction to Economics (40 credits)
Contemporary Approaches to Social Science and Humanities (20 credits) or Project Management (20 credits)
- Social Sciences route**
Introduction to Social Sciences (40 credits)
Contemporary Approaches to Social Science and Humanities (20 credits)

You'll need to earn 120 credits from all module options.



2-term: Jan or Mar
3-term: Sep or Jan



2-term: IELTS 6.0
(with a minimum of 5.5 in all subskills) or equivalent.
3-term: IELTS 5.5
(with a minimum of 5.0 in all subskills) or equivalent.

Law – PMLW

Choose from 8 degrees.



Prepare to study at The City Law School – formerly Inns of Court School of Law, the only provider of the Bar exam until 1997. Four British prime ministers, two Ghanaian presidents and Mahatma Gandhi studied there.

What will I study?

You'll study all of these core modules:

- English Language and Study Skills (30 credits)
- Research Skills (30 credits)
- Introduction to English Law (40 credits)
- International Commercial Law (20 credits)

Once you've successfully completed your International Pre-Master's programme, we'll help you choose your City, University of London degree. Depending on your pathway, you could study:

Degree	Pathway(s)	Specific requirements	English level	Final grade
Advanced Mechanical Engineering MSc	PMCSE	Students need to apply for an ATAS certificate before joining this degree.	65%	60%
Business Economics MSc	PMESS	None	65% with no less than 60% in each component	60%
Civil Engineering Structures MSc	PMCSE	None	65%	60%
Computer Games Technology MSc [Ⓟ]	PMCSE	None	65%	60%
Construction Management MSc	PMCSE	None	65%	60%
Creative Writing and Publishing MA	PMESS	None	70%	65%
Criminal Litigation LLM	PMLW	None	70%	60%
Criminology and Criminal Justice MSc	PMESS	None	65%	60%
Culture, Policy and Management MA	PMESS	None	70%	60%
Cyber Security MSc [Ⓟ]	PMCSE	None	65%	60%
Data Science MSc [Ⓟ]	PMCSE	None	65%	60%
Development Economics MSc	PMESS	None	65% with no less than 60% in each component	60%
Diplomacy and Foreign Policy MA	PMESS	None	65%	60%
Economics MSc	PMESS	None	65% with no less than 60% in each component	60%
Economic Evaluation in Healthcare MSc	PMESS	None	65% with no less than 60% in each component.	65%
Energy and Environmental Technology and Economics MSc	PMCSE	None	65%	60%
Financial Economics MSc	PMESS	None	65% with no less than 60% in each component	60%
Financial Technology and Systems MSc	PMCSE	None	65%	60%
Food Policy MSc	PMESS	None	70%	65%
Global Political Economy MA	PMESS	None	65%	60%
Health Economics MSc	PMESS	None	65% with no less than 60% in each component	60%
Health Management MSc	PMESS	None	70%	65%
Human-Computer Interaction Design MSc [Ⓟ]	PMCSE	None	70% with a minimum of 65% in each component	60%
International Banking and Finance Law LLM	PMLW	None	70%	60%
International Business Economics MSc	PMESS	None	65% with no less than 60% in each component	60%
International Litigation and Dispute Resolution LLM	PMLW	None	70%	60%
International Commercial Law LLM	PMLW	None	70%	60%
International Human Rights LLM	PMLW	None	70%	60%
International Politics and Human Rights MA	PMESS	None	65%	60%
International Politics MA	PMESS	None	65%	60%
Maritime Law LLM	PMLW	None	70%	60%
Maritime Operations and Management MSc	PMCSE	None	65%	60%
Master of Laws LLM	PMLW	None	70%	60%
Master of Public Health MPH	None	None	70%	65%
Media and Communications MA	PMESS	None	70% in the writing component and a minimum of 65% in all other components	60%
Project Management, Finance and Risk MSc	PMESS	None	65%	60%
Public International Law LLM	PMLW	None	70%	60%
Publishing/International Publishing MA	PMESS	None	70%	60%
Renewable Energy and Power Systems Management MSc	PMCSE	None	65%	60%
Software Engineering with Cloud Computing MSc [Ⓟ]	PMCSE	None	65%	60%

Scan the QR codes or visit intostudy.com/city/courses to find out more about each programme, including a full list of progression options.

[Ⓟ] Degree option with a work placement also available

Please note: English level and academic progression requirements are correct to the best of our knowledge at the time of going to print. In some circumstances these may change throughout the year – please visit www.intostudy.com/city for the most up to date information.



Start dates



English requirements

Dates and prices

The cost of your programme may vary depending on factors including the pathway chosen and programme length. The following guide to costs is based on pricing for the current academic year and provides an indication of the cost of attendance for some of our pathways. For specific cost information, please refer online: www.intostudy.com/city/courses

Estimated cost of attendance based on prices for current academic year 2023-24						
Study length	Tuition	Accommodation	Books and fees	Airport pick up*	Insurance	Total
Academic programmes						
International Foundation (2 term)	£16,695	£6,812–£9,230	£515	£174–£210	£269	£24,465–£26,919
International Foundation (3 term)	£18,300–£20,465	£10,480–£14,200	£515	£174–£210	£413	£29,882–£35,803
International Foundation (4 term)	£20,880–£22,495	£13,624–£18,460	£570	£174–£210	£537	£35,785–£34,272
Pre-Master's (2 term)	£12,295	£6,812–£9,230	£515	£174–£210	£269	£20,065–£22,519
Pre-Master's (3 term)	£18,465	£10,480–£14,200	£515	£174–£210	£413	£30,047–£33,803
English language courses						
1 term	£4,800	-	£90	-	-	£4,890

Start months and term dates 2024–25	
Academic programmes	
September (3 term)	Mon 16 Sep 2024–Tue 01 Jul 2025
September (4 term)	Mon 16 Sep 2024–Fri 29 Aug 2025
January (3 term)	Mon 06 Jan 2025–Fri 29 Aug 2025
January (2 term)	Mon 06 Jan 2025–Tue 01 Jul 2025
March (2 term) International Foundation	Mon 10 Mar 2025–Fri 29 Aug 2025
March (2 term) Pre-Master's	Mon 31 Mar 2025–Fri 29 Aug 2025

Please note the prices shown are for the current academic year of 01 September 2023 – 31 August 2024 and are for indicative purposes only. For full details of term dates, please visit the relevant course page at intostudy.com/city/courses

* Please note airport pickup is optional and is not included in the total.

Apply online:
apply.intostudy.com

Apply via your local education counsellor.
If you would like us to put you in contact with one of our counsellors please contact us.

Check to see if you're eligible for a scholarship:
intostudy.com/city/scholarships

Discover more online

For students:

intostudy.com/city

For education counsellors:

partnerportal.intoglobal.com/city

Connect with us

 facebook.com/intocityuniversitylondon

 myin.to/intocityvideos

 instagram.com/intocityunilondon

Contact us

intostudy.com/en/contact

Visit the Centre:

intocity@intoglobal.com or +44 203 752 220

Centre address details:

INTO City, University of London
102 Middlesex Street
London, E1 7EZ
United Kingdom

© INTO City LLP, September 2023. Every effort is made to ensure that the information provided in this document is correct at the time of publication. However, from time to time there may be occasions where some of the information has changed since the date of publication. The most up to date information can be found on our website at www.intostudy.com/city – please refer to this before submitting your application. If, in our opinion, we consider that any change has been made which has a material impact on any offer that has been made to you to study with us we will inform you of these changes in writing. The information provided in this document is subject to INTO City, University of London's terms and conditions which can be accessed at www.intostudy.com/city/terms

INTO City LLP, registered number OC376452.
Registered office: One Gloucester Place, Brighton, East Sussex, BN1 4AA, UK.

Education provider sponsor number P7VG4XC7



Through innovative partnerships with leading universities, we expand opportunities for higher education, ensuring success and transforming the lives of our students and staff.

Education counsellor's stamp