



Adult Dates and Fees

2025

ETC International College

Courses

General English

Specialist English

Exam Preparation

Young Learner Programme

Accommodation

Airport Transfers



Adults
(16+)

Accredited by the
BRITISH COUNCIL
for the teaching
of English in the UK

MEMBER

ENGLISH
UK

www.etc-inter.net



TRINITY
COLLEGE LONDON
Registered Examination Centre 31075

LCCI
International
Qualifications

TOLES
— LEGAL —



General English

Our most popular course

Studying on this course will develop your speaking, listening, reading and writing skills; supported by the necessary **grammar, vocabulary** and **pronunciation** input.



Reading



Writing



Listening



Speaking

Built into every course:

Placement test | Needs analysis | Skills development | Task-based activities | Proficiency tests | Tutorials
Learner skills development | Progress tests | Homework | Academic counselling | Constructive feedback

General English	Hours per week	Lessons per week	Cost per week
Standard	15	20	£230
Intensive	18	24	£260
Super Intensive	21	28	£290
Full Immersion	30	40	£460
One - to - One Courses	£70 per 45 minute lesson		

Enrolment fee (non-refundable): £100 per person.
payable once only (applies to all courses).

Books

Books are provided in the classroom for all students to use, free of charge, throughout their course. The books remain the property of ETC. Students may buy their own books if they wish. Workbooks are optional and can be purchased separately.



Course Dates

Please note that one level normally runs for 12 weeks. Beginners are recommended to start on the term start dates.

Term Start Dates 2025

6th January

31st March

23rd June

22nd September

ETC will be closed on the following public holiday dates:

Bank Holidays 2025

18th April

21st April

5th May

26th May

25th August

Christmas 2024

ETC will be closed on the following dates for the Christmas season:

Last day of term: 20th December 2024

ETC re-opens: 6th January 2025

Christmas 2025

ETC will be closed on the following dates for the Christmas season:

Last day of term: 19th December 2025

ETC re-opens: 5th January 2026

All lessons are 45 minutes long. ETC specifies a maximum class size of 14, however, where classrooms permit and are suitably equipped, lit, heated and ventilated, we reserve the right to use these rooms to their maximum capacity. No classes will exceed 18 students.

Our average class size in off-peak seasons is lower.

Classes may be in the mornings or the afternoons during busy periods.

Minimum
— age is —
16

The minimum age for **individual** students to study at ETC International College is 16 years old. Students aged 16 and 17 must have parental permission to study in adult classes.

ETC may accept students under the age of 16 during the year should there be other students of a similar age in groups and suitable safeguarding and supervision arrangements are in place.

Specialist English

ETC offers a range of Specialist Courses to equip you with the skills necessary to perform effectively in your particular profession.



Whether you are studying or have mastered your profession, we can help to provide you with the linguistic skills required to communicate effectively in your field.

ETC can provide the following Specialist Courses on this structure:

Please ask for alternative subject areas.

Specialist Course Structure

Hours per week	Lessons per week	Cost per week
22.5	30	£340

Enrolment fee (non-refundable):
£100 per person (payable once only)

20 lessons
(15 hours)
of GE or IELTS
per week

+

10 lessons
(7.5 hours)
of Specialist
English
per week



- **English for Accounting, Banking and Finance**
- English for Agriculture
- English for Automotive
- English for Aviation (+ Drone Flight)
- **Business English**
- English for Computing / I.T.
- English for Cyber Security
- English for the Energy Industry (Oil, gas and alternative fuels)
- English for Engineering
- English for the Fashion Industry
- English for Hospitality
- English for HR
- English for International Affairs
- English for Journalism
- **Legal English**
- **Medical English**
- **Military English**
- Nursing English
- **OET preparation for healthcare**
- English for Public Admin
- English for Security
- English for Taxi Drivers
- **Technical English**
- Tourism English (English for Tourism and Hotel Management)

Students studying 24 weeks on our Specialist English courses will receive a Diploma in the specific subject.

OET for healthcare

The OET is suitable for anyone working in the healthcare industry, including:

- Doctors
- Nurses
- Physiotherapists
- Pharmacists

The test is recognised internationally for visas in the UK, US, UZ and Australia.

ETC is approved to provide OET preparation courses, preparing students for success in OET. This course is offered on the same structure and price as the Specialist English courses.

OET is a global leader in
English language testing
for
healthcare professionals.



Exam Preparation

IELTS Exam Preparation

IELTS Exam Preparation	Hours per week	Lessons per week	Cost per week
Standard	15	20	£230
Intensive	18	24	£260
Super Intensive	21	28	£290
Full Immersion	30	40	£460
One - to - One Courses	£70 per 45 minute lesson		

Enrolment fee (non-refundable): £100 per person. payable once only (applies to all courses).

IELTS Preparation courses are 15 hours per week. Intensive options include 15 hours exam preparation, plus General English communication skills lessons.

IELTS is accepted by over 6,000 institutions around the world, including universities, colleges and employers in English-speaking countries and beyond. In fact, almost all universities in the UK, Australia, Canada and New Zealand accept IELTS.

TOEIC and Cambridge Exam Preparation Courses - Cambridge B2 First / C1 Advanced

B2 First / C1 Advanced / TOEIC Exam Preparation	Hours per week	Lessons per week	Cost Per week
Exam Preparation	22.5	30	£340
One - to - one courses	£70 per 45 minute lesson		

Enrolment fee (non-refundable): £100 per person. payable once only (applies to all courses).

20 lessons
(15 hours)
of GE
per week

+ 10 lessons
(7.5 hours) of
Exam Preparation
per week

TOEIC and Cambridge B2 First and C1 Advanced Exam Preparation courses include 20 lessons (15 hours) per week of General English + 10 lessons (7.5 hours) per week of specialised Exam Preparation.

Exam Fees

Cambridge C1 Advanced (PB/CB)	£223	TOLES Foundation	£210
Cambridge B2 First (PB/CB)	£220	TOLES Higher	£235
Cambridge KET	£175	TOLES Advanced	£275
Cambridge PET	£180	Trinity SELT	On Request
Cambridge CPE	£215	Trinity College ISE	£180
IELTS	£220	Trinity GESE (Online)	£46 - £105
IELTS UKVI	£235	IELTS Pretrialing	£50

Prices do not include delivery. Please collect your certificate from ETC if possible. Delivery charges may apply if postage is required.

PB = Paper Based,
CB = Computer Based

Please contact ETC to confirm course and exam dates before booking your return flights or holidays.

Some exams may take place after the end of the exam preparation course.

Cambridge exam courses that start in December include a 2 week Christmas holiday. ETC will be closed at that time.

Sample Timetable

This is a sample timetable and may be subject to change.

	Monday	Tuesday	Wednesday	Thursday	Friday
8:45 - 10:15	Lessons 1 & 2	Lessons 1 & 2	Lessons 1 & 2	Lessons 1 & 2	Lessons 1 & 2
Break					
10:45 - 12:15	Lessons 3 & 4	Lessons 3 & 4	Lessons 3 & 4	Lessons 3 & 4	Lessons 3 & 4
Lunch - [End of classes for Standard General English students].					
13:15 - 14:45	Intensive 1 (24)	Intensive 2 (24)	Intensive 1 (24)	Intensive 2 (24)	---
	Super Intensive (28)	Super Intensive (28)	Super Intensive (28)	Super Intensive (28)	---
	Full Immersion (40)	Full Immersion (40)	Full Immersion (40)	Full Immersion (40)	Full Immersion (40)
	Specialist Lessons	Specialist Lessons	Specialist Lessons	Specialist Lessons	Specialist Lessons
Break [End of classes for Intensive, Super Intensive & Specialist students].					
15:15 - 16:45	Full Immersion (40)	Full Immersion (40)	Full Immersion (40)	Full Immersion (40)	Full Immersion (40)

Young Learners Programme

The Young Learner Programme offers a little extra for our younger individual students. Alongside study and a choice of accommodation, students will have a planned excursion each full weekend they are with us, so you know they are getting more out of their stay in the UK. Towels and linen are included in all accommodation throughout their stay and rooms are cleaned weekly.

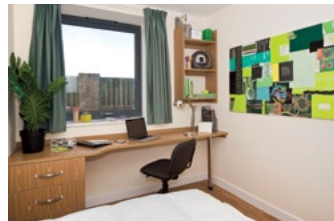
Included per week:



Choose your accommodation

Residence Available: 13th July - 24th August 2025

- Shared or single-room (subject to availability)
- Self-catered accommodation in one of ETC's residences or partner residences.
- CCTV
- Live-in staff available on call over night.
- Laundry facilities are available at additional cost.



Residence programme price

only **£755** per week
+ **Enrolment fee: £100**
(payable only once)

Homestay Available: 15th June - 24th August 2025

- Students will have a comfortable, clean shared room.
- Homestays are DBS checked and inspected regularly.
- Half board: breakfast and dinner Monday - Sunday, plus lunch on weekends.
- One load of laundry included per week.



Homestay programme price

only **£670** per week
+ **Enrolment fee: £100**
(payable only once)

Welfare*

We meet with our junior students weekly to check-in with them.

Curfew checks for 16-17 year olds are done at 22:00.

Dedicated Whatsapp group for 16-17s

Lead by you: assign your child's permissions on our Parental Permission Form.

All students and parents have access to our 24/7 emergency number.

Airport Transfers

Airport transfers are **not** included in the programme prices and are optional for students studying on the Young Learners Programme.

Shuttle Service

Students may wish to share transfers and costs by using our Shuttle Service, available on selected dates.

Shuttle Service Dates 2025	Cost
Sunday 15th June (arrival only)	£85 per journey, per person
Sunday 29th June	
Sunday 13th July	
Sunday 27th July	
Sunday 10th August	
Sunday 24th August (departure only)	

Arrivals

Arrival: LHR - Terminal 2 to ETC	UK Time
Shuttle departs Heathrow T2: (latest flight arrival: 11:00)	12:00
Shuttle departs Heathrow T2: (latest flight arrival: 16:00)	17:00

Departures

Departure: ETC to LHR Terminal 2	UK Time
Shuttle Departs ETC: (earliest departure flight: 10:00)	06:00
Latest flight departure: (earliest departure flight: 14:00)	10:00

Homestay students will need to pay for a taxi to ETC for the departure shuttle service.

*The same welfare and safeguarding applies to all of our 16 and 17 year old students, including those enrolled on tuition only programmes. Students are likely to share classes, activities, transfers and may be placed in the same accommodation as others over the age of 18.

Residential Accommodation

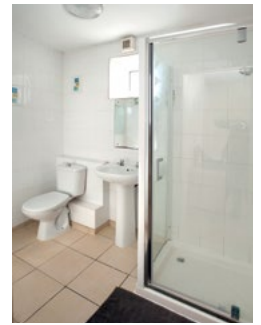
ETC On-Site Residence

The ETC Student Residence is located right next door to ETC - a very short walk from one building to the next! We have single and twin rooms (offering room only, bed and breakfast or half board, Monday - Friday).

Students benefit from not needing to pay for any transport between their accommodation and the classrooms. There are study areas for those who want peace and quiet to work in.

Rooms are checked by a member of staff every day. Linen and towels are included throughout your stay and rooms are cleaned weekly.





Age 16+ for individuals



Residential Accommodation Fees (subject to availability)	Price per week (low season) (5th January - 24th May 2025 & 31st August 2025 - 4th January 2026)	Price per week (peak season) (25th May 2025 - 13th July 2025 & 24th August 2025 - 30th August 2025)
Shared Room	£155	£175
Single Room	£220	£250
Extra Nights	£40 per night	£55 per night
To include continental breakfast (Monday - Friday in ETC Café)	+ £35	+ £35
To include half board (continental breakfast and cooked lunch, Monday - Friday)	+ £80	+ £80
To include half board with dietary requirements (Monday - Friday in ETC Café) (including lactose intolerant, vegetarian and 'gluten free' options)	+ £100	+ £100

Applicable to all residences:

Students will be placed in any one of our residences, depending on availability.

 Shared Kitchen	 Mini Fridge available to hire	 Bike Storage safe and secure	 Private bathroom with shower and toilet
 Cleaning Included	 CCTV and electronic site access	 On-Site Laundry (incurs additional charge)	 High-Speed Wi-Fi

All accommodation is available:

**Sunday
to
Sunday**

All food is served Monday - Friday
in ETC's on-site cafeteria

For full terms and conditions:
[www.etc-inter.net/
conditions-of-enrolment/](http://www.etc-inter.net/conditions-of-enrolment/)

A credit card authorisation of £250 is required to act as a deposit. If no credit card is available, an alternative will be requested. **We require one week of accommodation to be paid at the time of booking.** We can only secure accommodation for the period that has been paid in full. ETC Residence rules are in place to help all students to enjoy their stay with us; we ask all residents to respect these rules. Failure to respect the rules may result in the student being asked to leave the residence, with no refund payable. No refunds can be given after the student's date of arrival.

Additional Summer Residence

Age 16+ for individuals

Our summer residences consist of:

- 5 to 9 bedrooms per apartment
- Single rooms with a private bathroom
- Shared kitchen and lounge
- Self-catered accommodation
- Weekly cleaning.
- Convenient locations with frequent buses to Bournemouth Town centre and ETC.
- Linen and towels included throughout your stay

**Available from: 13th July
- 24th August 2025**

Single room price per person per week = **£250**

ETC works with partner residences during busier periods. Students are responsible for taking out their own rubbish to the refuse collection point to maintain a clean and pleasant living environment for all.

Homestay Fees

ETC can arrange homestay accommodation for you if you would like to stay with a local family. Many students who come to study at ETC choose this option, because living with a homestay is a good way to practise your spoken English outside the school.

You will have a comfortable, clean room with a desk to study at. Accommodation is half-board during the week (bed, breakfast and evening meal) and full-board at weekends (bed, breakfast, lunch and evening meal). Most of our families live on a local bus route, typically around 25 minutes. Linen and towels are included throughout your stay and rooms are cleaned weekly.

Homestay / Private Home Accommodation (subject to availability)	Low Season (5th January - 24 th May 2025 & 31st August 2025 - 4th January 2026)	High Season (25th May 2025 - 30th August 2025)
Booking fee (one off fee)	£40	£40
Single room (18+ year olds)	£205 / week	£255 / week
Single room (16 & 17 year olds)	£215 / week	£285 / week
During the high season a single room for 16 - 17 year olds is higher due to demand and the extra care our young adults require. These rooms are limited and are offered subject to availability on a first come, first served basis.		
Twin room (only available for pre-arranged pairs)	£185 / week	£215 / week
Extra night	£35 / night	£45 / night
Executive En-Suite	£295 / week (£50 per extra night)	£310 / week (£55 per extra night)
Cancellation Fee / Moving Fee	£100	£100
Room Retention Fee (for students going on holiday and would like to reserve their room)	£80 / week	£80 / week
Dietary requirements fee (including lactose intolerant, vegetarian and gluten free options)	£30 / week	£30 / week
Christmas supplement (for students staying over the Christmas holidays: 21/12/2025 - 04/01/2026)	£50 / week	---

Executive Homestays

Executive homestay accommodation includes single room accommodation with en-suite facilities and free access to the Internet.

All accommodation is available:

Sunday
to
Sunday

For full terms and conditions:

[www.etc-inter.net/
conditions-of-enrolment/](http://www.etc-inter.net/conditions-of-enrolment/)

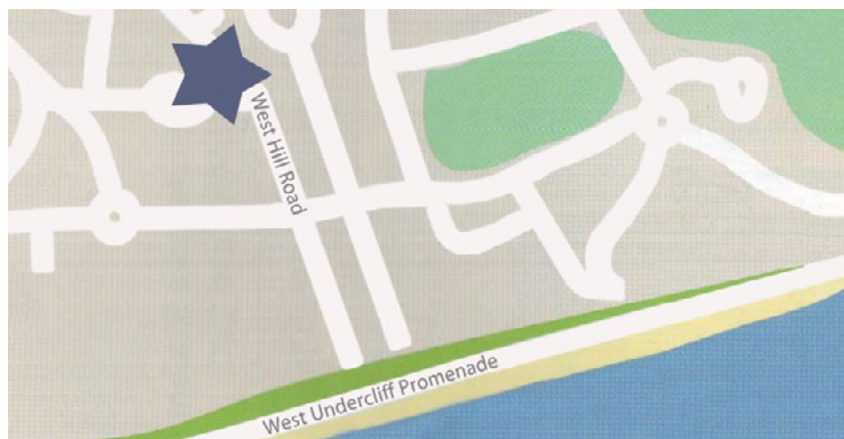


Private Home Accommodation

This accommodation is for students aged 18+ only. The board and prices are the same as Standard Homestays. With this type of accommodation, it is likely that the ratio of students to host will be higher (usually up to 8 students).

This should not affect the amount of contact time that students have with the host, and students may find they enjoy the social opportunities that occur with being in this type of accommodation.

ETC in Bournemouth



2 hours from
London



Airport Transfers

If you book this service, you will be picked up from the airport and taken directly to your accommodation.

Add-ons

Assisted Check-In	£50
Waiting Charge*	£30 per hour

*Waiting charges are applied after the first hour and cover the cost of the driver's time and parking charges.

Private Airport Transfer (One Way)

	1 Person	2+ People (per person)
London Heathrow Airport	£180	£95
London Gatwick Airport	£200	£110
Luton Airport	£220	£120
Stansted Airport	£270	£150
Bournemouth Airport	£45	£25
Southampton Airport	£100	£55
London Central	£260	£140



30.10.24

Further Information

Prices are correct at time of printing. **Please note prices and policies are subject to change during the year.**

Always check our website where the latest updates are available.

Please view our Conditions of Enrolment on our website for full payment information.



Contact us

ETC International College | 22-26 West Hill Road | Bournemouth | BH2 5PG

Tel: +44 (0) 1202 559 044 | Fax: +44 (0) 1202 780 162

www.etc-inter.net | enquiries@etc-inter.net