



Your destination for **EAST COAST TECH**

Guide for International Students **2023-2024**



Mason is your destination for EAST COAST TECH

#1

YOUNG US UNIVERSITY

Times Higher Education 2022

#20

MOST INNOVATIVE SCHOOLS

U.S. News & World Report 2023

#64

TOP PUBLIC SCHOOLS

U.S. News & World Report 2023

#137

IN NATIONAL UNIVERSITIES

U.S. News & World Report 2023



Earn your degree near Washington, DC.

Mason's main Fairfax Campus is **24 km** from Washington, DC.

Mason Square, in Arlington, (Graduate programs only) is **8 km** from Washington, DC.

FAST FACTS

Founded in **1972**

County Population: **1M+**

Enrollment: **38,000+**

Countries Represented: **130+**

Master's and PhD: **130+**

Additional Campuses:

Mason Square in Arlington, Virginia; Science and Technology Campus in Prince William County, Virginia; Mason Korea in Incheon, South Korea

Campus: **Fairfax, Virginia**

Campus Size: **677 acres**

International Students: **3,100+**

Bachelor's: **80+**

Research: **\$186M**

Mason invests in tech talent like you.

Mason will create a pipeline for talent and innovation that serves the region by investing \$250 million to expand Mason Square over the next five years, including:

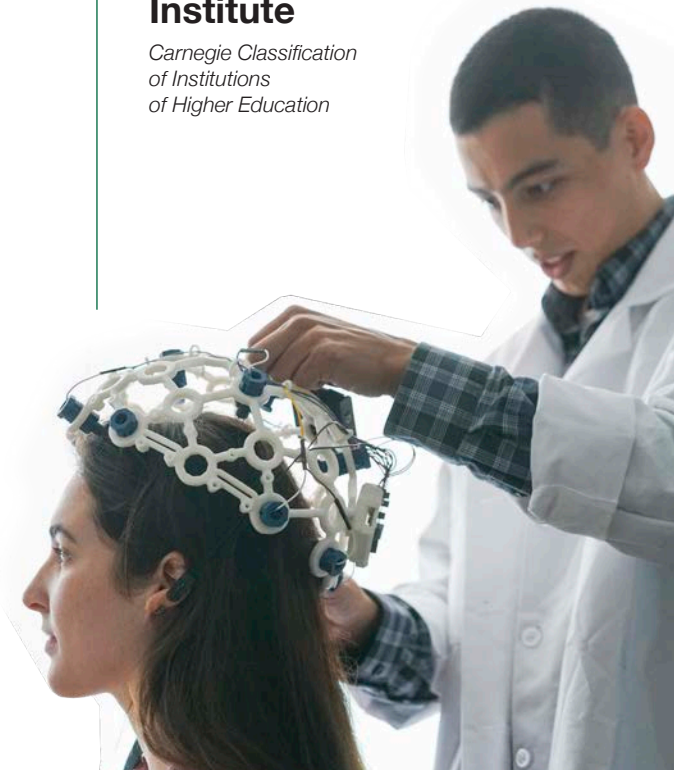
- A new School of Computing at Mason Square
- Institute for Digital Innovation (IDIA): a hub of innovation bringing together entrepreneurs, researchers and business leaders
- Increasing enrollment from 6,500 students in computing programs to 13,000 by 2024

Earn competitive salaries in the Northern Virginia tech corridor.

As of June 2022, tech workers in the Washington metro area make 97% of what those in San Francisco earn according to *Axios Washington DC 2022*.

Tier 1 Research Institute

Carnegie Classification of Institutions of Higher Education



#9

Cybersecurity
(worldwide)
EduRank 2022

#10

Criminology
(graduate)
U.S. News & World Report 2023

Cost of living in Northern Virginia is **23% lower** than San Francisco according to *Nerd Wallet's cost of living calculator*.

#24

Public Policy
Analysis (graduate)
U.S. News & World Report 2023

#63

Computer Science
(graduate)
U.S. News & World Report 2023

#86

Best Undergraduate
Business Programs
U.S. News & World Report 2023

The Fairfax Campus

Fairfax is a safe, residential area in the heart of Northern Virginia. You can take free shuttles around Fairfax and to the Metro station to go directly into Washington, DC.

Science and Technology Campus

This campus is home to many state-of-the-art labs and located in one of the fastest growing biotechnology areas in the United States.



Mason Square

CAPITALIZE ON YOUR CAREER

with a Mason education and our East Coast tech hub.



Science and Technology Campus



Fairfax Campus



Mason Korea Campus

Mason Square

Mason Square is located in the safe and urban Arlington neighborhood of Virginia Square. Just 15 minutes outside of Washington, DC, this campus has a strong focus on career development and hosts a variety of Mason's graduate and professional programs. You can find Amazon HQ2 nearby.

Programs offered

You will have classes at this campus if you are in one of the following Graduate Pathway programs:

- Arts Management
- Business (all concentrations)*
- Conflict Analysis and Resolution
- Economics
- Global Affairs
- Global Commerce
- Policy, Public Policy

*The Accounting Pathway courses are included in Business (all concentrations) and are held in Fairfax, but the accounting degree program is based in Mason Square.

Find out more about Mason Square at arlington.gmu.edu

The Mason Korea Campus

The Mason Korea campus offers US degrees in six undergraduate disciplines in order to educate the next generation of global leaders. Approved by the Korean Ministry of Education, these degree programs allow students to spend three years at Mason Korea in Songdo and one year in the United States at our campus in Fairfax, Virginia. When these students graduate, they will receive the same degree as all students from George Mason University.

Undergraduate programs

- Business
- Computational and Data Sciences
- Computer Game Design
- Conflict Analysis and Resolution
- Economics
- Global Affairs

Find out more about Mason Korea at masonkorea.gmu.edu



Faculty leaders are policy leaders:

You will learn from policymakers, just minutes away from government branches making today's biggest decisions.

Network in the nation's capital:

In Washington, DC, it is estimated that about 80% of jobs are found through networking according to *Global Experiences 2020*.

Beyond Washington, DC, **Northern Virginia is home to 9,500 tech firms and 10 Fortune 500 company headquarters.**

Fairfax County EDA 2020

Northern Virginia is home to **Amazon's second headquarters.**



Living at Mason

Feel right at home at Mason, where we have everything you need to settle into university life.

ON-CAMPUS | FAIRFAX

Living options

Ángel Cabrera Global Center:

- Houses 270 students
- Access to free laundry facilities, 22 classrooms, a meditation space, and a buffet-style dining hall
- All residence halls are double-occupancy with a full en-suite bathroom

You must be 17 years old to live on campus. For more information on housing, please contact intofd@gmu.edu

For more information about living at Mason, visit www.intostudy.com/mason/living

Dining halls

Three all-you-care-to-eat dining halls | 20+ Retail locations

Southside Dining Hall: An all-you-care-to-eat dining area with eight different stations and cuisine options

Ike's Dining Hall: An all-you-care-to-eat dining hall equipped with a state-of-the-art pizza oven

The Globe: An all-you-care-to-eat residential dining hall offering halal, vegetarian and gluten-free options

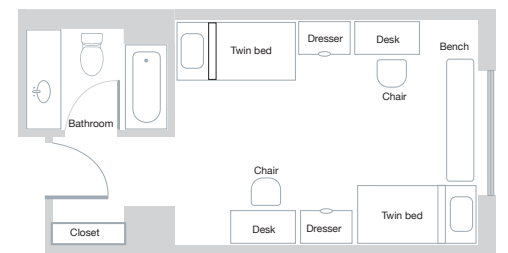
For more information on dining, please visit dining.gmu.edu, or contact dining@gmu.edu

Become a part of Mason Nation

- Join one of the 460+ student organizations.
- Attend a free game for one of the 22 NCAA Division I athletic teams.
- Take part in International Week competitions and events.
- Attend a concert at EagleBank Arena.

Ángel Cabrera Global Center

Double Room



TOP 100

public university programs
in the #4 market for

TECH TALENT

CBRE 2022

Computer science

- Earn your degree from a Top 100 graduate computer science program in the US. *U.S. News & World Report 2023*
- The DC metro area is the most concentrated tech talent market in the United States and Canada after San Francisco, Seattle and Toronto. *CBRE 2022*
- Our program is Top 20 in computer and information sciences research expenditures among public universities. *NSF Higher Education Research & Development 2020*

\$140,368

is the average computer science salary in DC as of August 2022

Salary.com 2022

92%

of Mason College of Engineering and Computing graduates find full-time employment.

Career Plans Survey, George Mason University, 2021

Cybersecurity

The College of Engineering and Computing holds one of the longest track records of information security advances in the United States. Thirty years ago, Mason was one of the first universities to offer specialized information security and assurance programs.

Cybersecurity engineering facilities:

Mason's Center for Secure Information Systems

- Established in 1990, the center became the first academic center in security at a university in the United States.
- Collaborate with the center's major government and corporate sponsors.

Mason's Commonwealth Cybersecurity Initiative Living (CCI) Innovation Lab:

- This lab includes both the CCI and Cybersecurity Manufacturing Innovation Institute (CyManII).
- This leading cybersecurity institute in the Northern Virginia region resulted from a five-year, \$4.8 million grant by the C4I and Cyber Center.

\$120,044

median annual salary for cybersecurity engineers in the Washington, DC area

Glassdoor 2021



New! Graduate certificates

Complete your graduate certificate in less than a year or apply your certificate credit towards one of our master's degree programs:

- Business analytics
- Data analytics engineering
- Public health

More graduate certificates will be announced in the 2023-2024 academic year. Please scan QR code for more details.

Why earn your graduate certificate from Mason?

Capital connections: Take advantage of Washington DC's business network.

Complete your certificate in one year or less: Get a head start on your career with an accelerated timeline.

Return on investment: Mason is ranked No.165 in Best Value Schools by *U.S. News & World Report 2022*.

Continue to your master's: Almost all of our certificates can be put towards a related graduate degree.

Business analytics

Graduate ready to help organizations make informed decisions based on concrete data analysis. Mason's business analytics program provides you with in-demand data science skills including:

- Data management and governance
- Data visualization
- Deployment of data-mining techniques
- Econometrics and related statistical techniques
- Enterprise systems and applications
- Market research analysis

Data analytics engineering

- *Glassdoor* reports that the median annual salary for a data engineer in Washington, DC is **\$116,203** as of August 2022.
- The *U.S. Bureau of Labor Statistics* reports the job outlook for operation research analysts is projected to grow 25% from 2020–2030.
- Mason's College of Engineering and Computing offers networking and field work opportunities with the nation's top tech firms. You can participate in co-op research programs with government and private-sector research partnerships.

\$104,629

average annual salary for management analysts in Washington, DC

Indeed 2022

Public policy

Earn your policy degree where the nation's major policy decisions are made.

- The Schar School of Policy is ranked No. 39 out of 270. *U.S. News & World Report 2023, Best Graduate Schools*
- Address and engage on difficult topics in The Democracy Lab.
- You can find Schar alumni working at the World Bank, the United Nations, the National Endowment for Democracy, Deloitte, Booz Allen Hamilton and many others.

Public health

- Complete an internship or practicum in or near the nation's capital with a federal agency, a public health department, a private sector consulting firm or a non-governmental health organization.
- #42 Top School for a Public Health Degree *College Factual 2022*
- Best College in Virginia for Degrees in Health Professions *College Factual 2022*
- Master of Public Health accredited by the *Council on Education for Public Health (CEPH)*

MASON MAKES CAREERS HAPPEN

Mason graduate statistics

86% Employed in the Virginia, Maryland and Washington, DC area

\$70,000 Median salary + bonus

88% of Mason graduates reported a positive career outcome within six months of graduation.

86% of employed students are in positions related to their career goals.

Mason career resources

140+ Career programs and hiring events

700+ Employers recruit at Mason

University-wide commitment to career-ready graduates

400+ Active faculty and staff in the Mason Career Influencers Network



Learn from policy leaders

Dr. Amira Roess

is a professor of Global Health and Epidemiology in the College of Health and Human Services, where she leads research on the emergence and transmission of infectious diseases from animals to humans. Her current studies in the US, Bangladesh, Egypt and Ethiopia are funded by the Gates Foundation and the National Science Foundation.



Michael V. Hayden

is a former CIA and NSA director who teaches in the Schar School of Policy and Government. He founded the Michael V. Hayden Center for Intelligence, Policy and International Security at Mason.

WORLD-CLASS FACULTY AND ALUMNI



Mason's alumni change the world

Anousheh Ansari

received her bachelor's in electrical engineering from Mason. She was the first Iranian-American and Muslim woman in space.



Hala Gorani

received her bachelor's in economics from Mason and is an award-winning CNN anchor. She is the senior correspondent for CNN International, based in London.

Mason has an active alumni network, with more than 225,000 Mason graduates worldwide. 63% of Mason alumni live in the Washington, DC, area.

Top Employers of Mason Alumni

- Amazon
- Accenture
- Apple
- Deloitte
- Disney
- General Dynamics
- Inova Health System
- KPMG
- Marriott International
- Microsoft
- NASA
- Siemens
- World Bank



“ Looking back, I could not even imagine that I would find a spot in this highly competitive career market. However, the skills I gathered throughout my path at George Mason University helped me not only be competitive but also become one of the rising stars. ”

Sofya, Russia

BS, Tourism and Events Management Marketing Director at Mason Dining - Sodexo

Academic Programs

Find your degree. With a wide range of subject areas and admissions options, you can find the perfect degree for your chosen career. You can choose to apply for direct entry to the university or for a Pathway program that provides extra academic, language and cultural support. From the day you apply to the day you graduate, we are here to help you succeed every step of the way. Turn to the back cover to learn how to apply.

B = Bachelor's M = Master's D = Doctorate

GP Graduate Pathway program that can lead to this degree is indicated in purple. This degree is also available through direct admission.

- Indicates a George Mason University degree program.
- ★ Indicates a three-year international undergraduate degree can lead to this master's degree through the Graduate Bridge Program.
- ▶ Designated STEM degree by the U.S. Department of Homeland Security.
- ✓ Indicates a program that has the option of choosing no concentration.

	B	M	D
Antonin Scalia Law School			
Law [LLM: Cyber, Intelligence, and National Security; Global Antitrust Law and Economics; Intellectual Property; Law and Economics; US Law] [JM concentrations: Criminal Justice; Employment and Labor Relations; Financial and Commercial Services; Intellectual Property and Technology; Government Contracts and Regulation; National Security, Cybersecurity and Information Privacy]		●	●
Law and Business		●	●
Law and Public Policy		●	●
College of Education and Human Development			
School of Education			
Counseling [MEd concentrations: Clinical Mental Health Counseling; School Counseling]		●	
Curriculum and Instruction* [MEd concentrations: Advanced Studies in Teaching and Learning; Assistive Technology; Teaching Culturally and Linguistically Diverse and Exceptional Learners; Early Childhood and Elementary Education: Learning Technologies; Literacy/Reading; Mathematics Specialist Leader; Secondary Education (6-12)]		●	GP
Early Childhood Education for Diverse Learners [BSEd concentrations ✓ : Early Childhood Special Education Licensure; Early/Primary Education PreK-3 Licensure; Early Childhood Special Education and Early/Primary Education PreK-3 Dual Licensure]		●	
Education [PhD concentration ✓ : Kinesiology]			●
Education Leadership [MEd concentrations ✓ : International School Leadership Research; Independent School Leadership]		●	
Educational Psychology* [MS concentrations: Assessment, Evaluation and Testing; Learning and Decision-Making in Leadership; Learning, Cognition and Motivation; Teacher Preparation]		●	GP
Elementary Education; PK- 6 Licensure		●	
▶ Learning Design and Technology		●	
Psychology [MA concentration: School Psychology]		●	
Physical Education		●	
Special Education* [BS concentrations ✓ : General K-12 Licensure; Adapted K-12 Licensure; Blindness and Visual Impairments PK-12 Licensure] [MEd concentrations: K-12 Adapted Curriculum Licensure; K-12 General Curriculum Licensure; PK-12 Blindness and Visual Impairments Licensure; Early Childhood Special Education; No Concentration]		●	GP
School of Kinesiology			
Athletic Training			●
Kinesiology	HD	●	
School of Sport, Recreation, and Tourism Management			
Recreation Management [BS concentrations: Parks and Outdoor Recreation; Therapeutic Recreation; Individualized]		●	
Sport and Recreation Studies* [MS concentrations: Individualized Study in Sport, Recreation and Tourism; Recreation Administration; Sport and Leisure Studies; Sport Management]		●	GP
Sport Management		●	
Tourism and Events Management	HD		
College of Health and Human Services			
Community Health [BS concentrations ✓ : Global Health; Clinical Science; Nutrition; Physical Activity and Public Health]	HD		
Global Health		●	
Health Administration [BS concentrations: Assisted Living/Senior Housing Administration; Health Systems Management]	HD		
Health and Medical Policy		●	
▶ Health Informatics* [MS concentrations: Health Data Analytics; Health Informatics Management; Population Health Informatics]		●	GP
Health Services Research [PhD concentrations: Health Systems and Policy; Knowledge Discovery and Health Informatics]			●
Health Systems Management [MHA concentrations: Healthcare Quality; Healthcare Policy; Executive]		●	GP
Nursing [MSN concentrations: Adult-Gerontology Nurse Practitioner; Family Nurse Practitioner in Primary Care; Nursing Administration; Nurse Educator] [DNP concentrations: Psychiatric Mental Health Nurse Practitioner; Adult Gerontology Nurse Practitioner; Family Nurse Practitioner; Advanced Clinical Nursing; Nursing Administration]		●	●
Nutrition [MS concentrations: Community Nutrition; Dietetics]		●	GP
Public Health [MPH concentrations: Community Health Promotion; Epidemiology; Food Security and Nutrition; Global Health; Health Equity and Social Justice; Health Policy; Public Health Communication; Public Health Practice (100% online only)] [PhD concentration: Epidemiology; Social and Behavioral Sciences]		●	GP

International Year One

Indicates the Undergraduate Pathway program that should be taken to progress to an undergraduate academic program. This program is also available through direct admission.

BU Business HD Human and Social Development
EC Engineering, Computing and Statistics HS Humanities and Social Sciences
SC Science

	B	M	D
Social Work [MSW specializations: Children, Youth, and Families; Adults and Health Aging]	HD	GP	
College of Humanities and Social Sciences			
Anthropology	HS	●	
Applied Industrial and Organizational Psychology		●	
Art History	HS	●	
Communication [BA concentrations: Interpersonal and Organizational Communication; Journalism; Media Production and Criticism; Political Communication; Public Relations] [MA specializations: Science Communication; Strategic Communication/Public Relations; Health Communication; Individualized]	HS	GP	●
Creative Writing [BFA concentrations: Fiction; Nonfiction; Poetry] [MFA concentrations: Fiction; Nonfiction Writing; Poetry]	●	●	
Criminal Justice		●	
Criminology, Law and Society [BA/BS concentrations ✓ : Criminal Justice; Law and Society; Homeland Security and Justice]	HS	●	●
Cultural Studies		●	
Economics* [BA concentrations ✓ : Philosophy, Politics and Economics] [BS concentrations ✓ : Managerial Economics; Philosophy, Politics and Economics]	HS	GP	●
English [BA concentrations: Creative Writing; Cultural Studies; Film and Media Studies; Folklore and Mythology; Literature; Linguistics; Writing and Rhetoric] [MA concentrations: Cultural Studies; Folklore Studies; Linguistics; Literature; Professional and Technical Writing; Teaching of Writing and Literature]	HS	GP	
Foreign Languages [BA concentrations: Arabic; Chinese; French; Korean; Spanish] [MA concentrations: French; Spanish; Spanish and French; Spanish/Bilingual-Multicultural Education]	HS	●	
Global Affairs* [BA concentrations: The Environment; Global Economy and Management; Global Governance; Global Inequalities and Responses; Human Security; International Development; Media, Communication and Culture; By World Region (Africa, Asia, Europe, Latin America, Middle East and North Africa, North America, Russia and Central Asia); Individualized] [MA specializations: Global Conflict and Security; Global Culture and Society; Global Economics and Development; Global Education; Global Governance and Public Management; Global Health; Global Media and Information Technology; Global Population and Geography]	HS	GP	
Higher Education and Student Development [MA tracks: Student Affairs Administration; Higher Education Leadership]		●	
History [BA concentrations ✓ : Digital History; Public History; Global History; Individualized; U.S. History] [MA concentrations: Predoctoral History; Applied History; Applied History with New Media and Information Technology Emphasis; Enrichment; Higher Education/Teaching] [PhD fields: U.S. History; European History; World History]	HS	●	●
Interdisciplinary Studies [MAIS concentrations: Computational Social Science; Energy and Sustainability; Religious Studies; Social Entrepreneurship; Social Justice and Human Rights; War and Military in Society; Women and Gender Studies* ; Individualized]		●	GP
Linguistics (See also English)		●	
Middle East and Islamic Studies		●	
Philosophy [BA concentrations ✓ : Philosophy and Law; Philosophy, Politics and Economics] [MA concentrations: Traditional and Contemporary Philosophy; Ethics and Public Affairs; Philosophy and Cultural Theory]	HS	●	
Psychology [BA/BS concentrations: Forensic Psychology; Human Factors and Applied Psychology; Work and Organizational Psychology; Clinical Psychology; Developmental Psychology; Educational Psychology; Health Psychology; Cognitive and Behavioral Neuroscience] [MA concentrations: Applied Developmental Psychology; Clinical Psychology; Cognitive and Behavioral Neuroscience; Industrial/Organizational Psychology; Human Factors/Applied Cognition] [PhD concentrations: Applied Developmental Psychology; Cognitive and Behavioral Neuroscience; Clinical Psychology; Human Factors/ Applied Cognition; Industrial/Organizational Psychology]	HS	●	●
Religious Studies	HS		
Russian and Eurasian Studies [BA concentrations: Eurasia Studies; Russia Studies; Russian Language and Culture]	HS		
Sociology [BA concentrations ✓ : Childhood and Youth; Deviance, Crime and Social Control; Global Sociology; Inequality and Social Change] [PhD concentrations: Institutions and Inequalities, Sociology of Globalization]	HS	●	●
Writing and Rhetoric (See also English)		●	
School of Integrative Studies			
▶ Environmental and Sustainability Studies [BA concentrations: Business and Sustainability; Climate Change and Society; Conservation and Sustainability; Environmental Policy and Economics; Equity and Environmental Justice; Sustainable Food and Agriculture]	HS SC		
Human Development and Family Science, BA, Individualized Study [BS concentrations: Individualized, Education Studies]		●	
Integrative Studies [BA concentrations: Childhood Studies; International Studies; Leadership and Organizational Development; Legal Studies; Education Studies; Social Justice and Human Rights; Social Science for Education; Women and Gender Studies; Individualized] [BS concentrations: Integrative Conservation; Life Sciences; Individualized]	HS		

	B	M	D
College of Science			
▶ Applied and Engineering Physics [Concentrations: Standard Physics; Applied Physics; Engineering Physics; Quantum Information Science and Engineering]		GP	
▶ Astronomy	SC		
▶ Atmospheric Sciences	●		
▶ Bioinformatics and Computational Biology		GP	●
▶ Bioinformatics Management		GP	
▶ Biology [BA concentration ✓ : Biological Illustration ; Biological Health] [BS concentrations ✓ : Biotechnology and Molecular Biology; Environmental and Conservation Biology; Bioinformatics; Biopsychology; Microbiology] [MS concentrations ✓ : Evolutionary Biology; Microbiology and Infectious Disease; Molecular Biology; Neuroscience; Nutrition Genetics and Nutraceuticals; Translational and Clinical Research]	SC	●	
▶ Biosciences [PhD concentrations: Biocomplexity and Evolutionary Biology; Cell and Molecular Biology; Microbiology and Infectious Diseases]			●
▶ Chemistry [BA concentration ✓ : Biochemistry] [BS concentrations ✓ : Analytical Chemistry; Environmental Chemistry; Biochemistry; Materials Chemistry] [MS concentration ✓ : Biochemistry]	SC	●	
▶ Chemistry and Biochemistry			●
▶ Climate Dynamics			●
▶ Climate Science [MS concentrations: Climate Modeling; Climate Data]		●	
▶ Computational and Data Sciences	SC		
▶ Computational Science		GP	
▶ Computational Sciences and Informatics			●
Computational Social Science			●
▶ Earth Systems Science		GP	
▶ Earth Systems and Geoinformation Sciences			●
▶ Environmental Science [BS concentrations: Conservation; Ecological Science; Environmental Health; Human and Ecosystem Response to Climate Change; Marine, Estuarine and Freshwater Ecology; Wildlife]	SC		
▶ Environmental Science and Policy [MS concentrations: Aquatic Ecology; Conservation Science and Policy; Environmental Science and Policy; Communication for Environmental Science, Policy and Human Behavior; Environment and Management; Energy and Sustainability Policy and Science; Conservation Medicine and Planetary Health]		GP	
▶ Environmental Science and Public Policy			●
▶ Forensic Science [BS concentrations ✓ : Forensic Biology; Forensic Chemistry] [MS concentrations: Crime Scene Investigation; Forensic Biology Analysis; Forensic Chemistry Analysis; Forensic/Biometric Identity Analysis]	SC	GP	
Geography [BA concentrations: Environmental Geography; Health Geography; Geanthropology]	SC		
Geographic and Cartographic Sciences		GP	
▶ Geoinformatics and Geospatial Intelligence			●
▶ Geology [BS concentrations: Earth Surface Processes; Environmental Geoscience; Geology; Oceanography and Estuarine Science; Paleontology]	SC		
▶ Mathematics [BS concentrations ✓ : Actuarial Mathematics; Applied Mathematics; Mathematical Statistics; Data Science]	SC	GP	●
▶ Medical Laboratory Science [BS concentrations: Generalist; Molecular Biology; Microbiology; Histotechnology]	SC		
▶ Neuroscience	SC	●	
▶ Physics [BS concentrations ✓ : Applied and Engineering Physics; Astrophysics; Computational Physics] [PhD concentrations: Standard; Engineering Physics]	SC	●	
College of Visual and Performing Arts			
Art and Visual Technology [BFA concentrations: Graphic Design; Studio Arts]	●		
Art Education [MAT concentration: Certification; Licensed Art Teachers]			●
Arts Management*		GP	
▶ Computer Game Design*		●	
Dance		●	
Film and Video Studies [BA concentrations: Producing; Directing; Screenwriting; Production and Post Production]		●	
Music [BA concentrations: Pedagogy; Music Technology] [BM concentrations: Composition; Jazz; Music Education; Music Technology; Performance] [MM concentrations: Collaborative Piano; Composition; Conducting; Jazz Studies; Music Education; Pedagogy; Performance]	HS	GP	
Musical Arts [DMA concentrations: Conducting, Composition, Performance]			●
Music Education			●
Theater [BA concentrations: Design and Technical Theater; Performance; Theater Education for Theater Arts PK-12; Theater Studies] [BFA concentrations: Design for Stage and Screen; Musical Theater Performance; Performance for Stage and Screen]	●		
Visual and Performing Arts [MFA concentrations: Dance; Graphic Design; Theater; Visual Art]			●
School of Business			
Accounting*		GP	
Business Administration*		GP	
Business [BS concentrations: Accounting; Business Analytics; Finance; Financial Planning and Wealth Management; Management; Management Information Systems; Marketing; Operations and Supply Chain Management] [PhD concentrations: Organizational Behavior; Strategic Management; Information Systems; Operations Management]	BU		●
Executive MBA			●
Finance			●
Management*		GP	
Real Estate Development*		GP	
Technology Management		●	

	B	M	D
Jimmy and Rosalynn Carter School for Peace and Conflict Resolution			
Conflict Analysis and Resolution* [BA/BS concentrations ✓ : Building Peace in Divided Societies; Global Engagement; Political and Social Action; Justice and Reconciliation; Interpersonal Dynamics; Collaborative Leadership; Environmental Conflict and Collaboration; Individualized] [MS concentrations: Conflict-Sensitive Development and Resilience; Dynamics of Violence; Inclusive Conflict Engagement; Individualized; Media, Narrative and Public Discourse; Social Justice Advocacy and Activism; Peacebuilding]	HD	GP	●
Schar School of Policy and Government			
▶ Biodefense [PhD concentrations: International Security; Terrorism and Homeland Security; Technology and Weapons of Mass Destruction]			●
Global Commerce and Policy* [MA concentrations ✓ : Global Development and Governance; Global Finance, Investment and Trade; Global Risk and Strategy]		GP	
Government and International Politics [BA concentrations in government: American Institutions and Processes; Comparative Politics; International Political Economy; International Relations; Law, Philosophy and Governance; Philosophy, Politics and Economics; Political Analysis; Political Behavior and Identity Politics; Public Policy and Administration; Individualized] [BA concentrations in non-government ✓ : Philosophy, Politics and Economics]	HS		
International Security [MA concentrations ✓ : Intelligence; Peace Operations; Transnational Challenges]			●
Organization Development and Knowledge Management			●
Political Science [MA concentrations: American Government and Politics; Comparative Politics; International Relations; International Security]			●
Public Administration [BS concentrations: Administration and Management; Public Policy; Nonprofit Management; US Government Institutions; Economic Policy Analysis; International Political Economy; Individualized] [MPA concentrations: Administration of Justice; Emergency Management and Homeland Security; Environmental Science and Public Policy; Human Resources Management; International Management; Managing Across Sectors; Nonprofit Management; Policy Studies; Public Management; Public and Nonprofit Finance; State and Local Government]	HS	●	
Public Policy*		GP	●
College of Engineering and Computing			
▶ Applied Computer Science [BS concentrations: Bioinformatics; Business Management; Business Marketing; Computer Game Design; Geoinformatics; Software Engineering]	EC		
▶ Applied Information Technology* [MS concentrations: Cyber Security; Cyber-Human Systems; Data Analytics and Intelligence Methods; IT Management; Machine Learning Engineering]		GP	
▶ Bioengineering* [BS concentrations: Bioengineering Healthcare Informatics; Bioengineering Prehealth; Biomaterials and Nanomedicine; Biomedical Imaging and Devices; Computational Biomedical Engineering; Neurotechnology and Computational Neuroscience] [PhD concentrations: Biomedical Imaging and Devices; Computational Biomedical Engineering; Biomaterials and Nanomedicine; Neurotechnology and Computational Neuroscience]	EC	GP	●
▶ Biostatistics*			GP
▶ Civil and Infrastructure Engineering* [MS concentrations: Construction Engineering and Management; Environmental and Water Resources Engineering; Geotechnical Engineering; Structural Engineering; Transportation Engineering]	EC	GP	●
▶ Computer Engineering* [BS concentrations: Computer Networks; Embedded Systems; Hardware and System Security; Internet of Things; Robotics; Power and Energy Systems; Space-Based Systems] [MS concentrations: Computer Architecture and Embedded Systems; Computer Networks; Digital Signal Processing; Digital System Design; Hardware Security and Cryptographic Engineering; Internet of Things and Network Security; Machine Learning and Intelligent Computing Architectures; Space-Based Systems]	EC	GP	
▶ Computer Science* [MS concentrations: Cyber Security; Machine Learning]	EC	GP	●
Cyber Security Engineering* [MS concentration ✓ : Secure Advanced Manufacturing and Supply Chains]	EC	GP	
▶ Data Analytics Engineering* [MS concentrations: Applied Analytics; Bioengineering; Business Analytics; Computational Linguistics; Cyber Analytics; Data Mining; Financial Engineering; Health Data Analytics; Internet of Things; Mechanical Engineering; Naval Engineering; Predictive Analytics; Statistical Analytics; Individualized]			GP
▶ Digital Forensics [MS concentrations ✓ : Penetration Testing/Reverse Engineering]			GP
▶ Electrical and Computer Engineering			●
▶ Electrical Engineering* [BS concentrations: Controls and Robotics; Communications and Signal Processing; Electronics; Embedded Systems; Internet of Things; Power and Energy Systems; Space-Based Systems] [MS concentrations: Bioengineering; Communications and Networking; Control and Robotics; Electronics; Machine Learning in Electrical Engineering; Power Systems and Smart Grid; Signal Processing; Space-Based Systems; Individualized]	EC	GP	
▶ Information Security and Assurance* [MS concentrations: Network and System Security; Applied Cyber Security]			GP
▶ Information Systems* [MS concentrations: Human-Centered Computing; Cloud-based Information Systems; No Concentration]			GP
▶ Information Technology [BS concentrations: Database Technology and Programming; Health Information Technology; Cyber Security; Network and Telecommunications; Web Application Development; Cloud Computing] [PhD concentrations: Information Security and Assurance; Information Science and Technology; Information Systems; Mechanical Engineering; Software Engineering]	EC		●
▶ Mechanical Engineering [BS optional concentration: Aerospace Engineering]	EC		
▶ Operations Research [MS concentrations: Data Analytics; Financial Engineering; Military Operations Research; Optimization; Stochastic Models; Individualized]		GP	
▶ Software Engineering*		GP	
▶ Statistical Science*		GP	●
▶ Statistics [BS concentrations: Applied Statistics; Mathematical Statistics; Sport Analytics; Statistical Analytics]	EC		
▶ Systems Engineering [MS concentrations: Advanced Transportation Systems; Command, Control, Communications, Computing, Intelligence and Cyber; Digital Engineering and System Architecture; Energy Systems; Financial Systems Engineering; Systems Engineering and Data Analytics; Systems Engineering of Software-Intensive Systems; Systems Management; Individualized]	EC	GP	
▶ Systems Engineering and Operations Research [Optional concentration: Mechanical Engineering]			●
▶ Telecommunications* [MS concentrations ✓ : Network Technologies; Network Forensics and Security]		GP	

Undergraduate Admissions

We offer several routes to admission. With more than 80 bachelor's degrees, flexible study plans and start dates throughout the year, we will help you find the option that is right for you.

There is no need to stress about where you start; just focus on where you're going. We don't design our programs for one type of student; our programs are built for everyone. Where you begin depends on your grades and English level. Where you end up is where you want to be: graduating with a bachelor's degree from George Mason University.

Direct Entry: If you meet the academic and English language requirements for your degree program, you can apply directly to George Mason University.

To apply, you will need the following required documents: declarations, high school transcripts, university transcripts (for transfer applicants), proof of degree, accounting of time, passport, English test score and personal statement (recommended). An application fee may apply.

For more information, visit catalog.gmu.edu/admissions/international-students

International Year One: International Year One allows you to begin earning credits toward your degree even if you do not meet the academic and English requirements for direct entry. You will receive additional academic, English language and cultural support to help you successfully complete your first year and graduate in the same amount of time as direct entry students. For more information, visit www.intostudy.com/mason/programs

English Language Program: If you do not meet the direct or International Year One entry language requirements, you can enter our Academic English program to improve your academic and language skills. Once you have achieved the required language level, you can progress to International Year One or enter your degree program directly. Learn more on page 21.

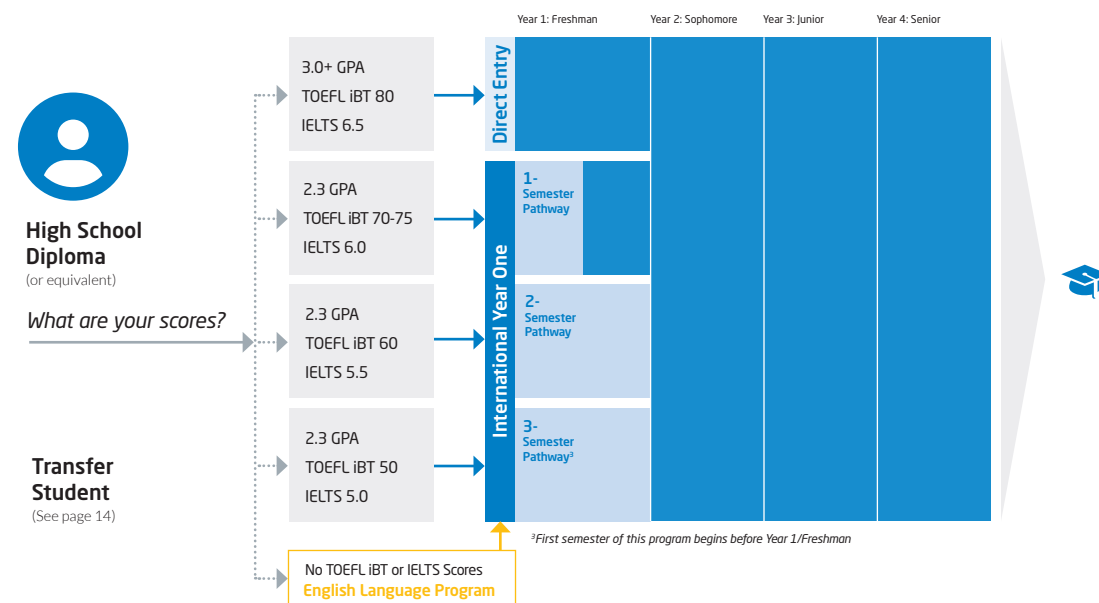
Entry Requirements				
Program	Direct*	International Year One**		
		1-Semester	2-Semester	3-Semester
Program requirements	<ul style="list-style-type: none"> High school diploma ACT/SAT may be required depending on program Additional materials may also be required 	High school diploma		
Minimum GPA Equivalent	3.0	2.3	2.3	2.3
TOEFL iBT	80 (18 in all subscores)	70-75 (15 in all subscores)	60 (13 in all subscores)	50 (10 in all subscores)
IELTS	6.5 (6.0 in all subscores)	6.0 (5.5 in all subscores)	5.5 (5.0 in all subscores)	5.0 (4.5 in all subscores)
Duolingo	110	100	90	80
Academic English	Level 6	Level 5	Level 4	Level 3

Notes: Entry requirements are subject to change and vary by program. SAT score of 500 on the evidence-based Reading and Writing section or ACT score of 20 for English and Writing may be used to waive English requirements for 1-Semester IYO.
*Engineering, art, music and nursing programs may include additional requirements. Subscores are not required for the College of Engineering and Computing 1- and 2-Semester programs.
**Some programs may require additional entry requirements.

Institutional Code TOEFL: 5827 SAT: 5827 ACT: 4357

Dates		
Program	Direct	International Year One
Start Dates	Fall 2023: Aug 2023 Spring 2024: Jan 2024	Fall 2023: Aug 21, 2023 Spring 2024: Jan 16, 2024

Undergraduate Degree Program



International Year One Programs

*Estimated credits remaining after Pathway/Total credit hours needed to complete degree.
**For English Language tests subscores, please see entry requirements table on page 12.

Semester(s)	Start Dates		Credits*	Entry Requirements:** High School Diploma				Progression Requirements All GPAs are minimum cumulative	
	Fall	Spring		GPA	TOEFL iBT	IELTS	Duolingo	GPA	Other
Business									
3-Semester	•	•	91-94/120	2.3	50	5.0	80	2.85	<ul style="list-style-type: none"> C or better in all courses No grades of NC, W or IN permitted
2-Semester	•	•	91-94/120		60	5.5	90		
1-Semester	•	•	104-105/120		70	6.0	100		
Engineering, Computing and Statistics²									
3-Semester	•	•	93-103/120+	2.3	50	5.0	80	2.75	<ul style="list-style-type: none"> B- or better in MATH, CS, IT, and ENGR courses C or better in other courses No grades of NC, W or IN permitted
2-Semester	•	•	93-103/120+		60 ¹	5.5 ¹	90		
1-Semester	•	•	104-105+/120+		75 ¹	6.0 ¹	100		
General Exploratory									
2-Semester	•	•	93-103/120+	2.3	60	5.5	90	2.5	<ul style="list-style-type: none"> C or better in all courses. No grades of NC, W, or IN permitted.
1-Semester	•	•	104-105+/120+		70	6.0	100		
Human and Social Development									
3-Semester	•	•	91-94/120	2.3	50	5.0	80	2.5	<ul style="list-style-type: none"> C or better in all courses No grades of NC, W or IN permitted
2-Semester	•	•	91-94/120		60	5.5	90		
1-Semester	•	•	104-105/120		70	6.0	100		
Humanities and Social Sciences									
3-Semester	•	•	91-94/120	2.3	50	5.0	80	2.5	<ul style="list-style-type: none"> C or better in all courses No grades of NC, W or IN permitted
2-Semester	•	•	91-94/120		60	5.5	90		
1-Semester	•	•	104-105/120		70	6.0	100		
Science									
3-Semester	•	•	91-94/120	2.3	50	5.0	80	2.5	<ul style="list-style-type: none"> C or better in all courses No grades of NC, W or IN permitted
2-Semester	•	•	82-86/120		60	5.5	90		
1-Semester	•	•	104-105/120		70	6.0	100		

Entry and progression requirements are subject to change and may vary by program. Some programs may require additional items to apply.

¹No subscores required

²Some programs will require more than 120 total credits to complete the degree

[Sample International Year One Program] Business

2-Semester Pathway	Degree Program Components	Program Information																					
Fall: August 21, 2023 Spring: January 16, 2024	120 credit hour program 26-29 credit hours apply from Pathway 91-94 credit hours remaining toward degree																						
Entry Requirements	Semester 1 Course Title Credit Hours	Progression Requirements																					
<ul style="list-style-type: none"> High school diploma with 2.3 minimum high school GPA equivalent Language requirement: <ul style="list-style-type: none"> TOEFL iBT 60 (13 in all subscores) IELTS 5.5 (5.0 in all subscores) Duolingo 90 	<table border="1"> <tr> <td>EAP 121</td> <td>Advanced EAP for Multilingual Writers</td> <td>4</td> </tr> <tr> <td>MATH 108</td> <td>Introductory Calculus with Business Applications</td> <td>3</td> </tr> <tr> <td>INYO 105</td> <td>American Cultures</td> <td>3</td> </tr> <tr> <td>EAP 102</td> <td>Language Support for American Cultures</td> <td>1</td> </tr> <tr> <td>BUS 100</td> <td>Business and Society</td> <td>3</td> </tr> <tr> <td>INYO 100</td> <td>Transition INTO Mason I</td> <td>1</td> </tr> <tr> <td colspan="2"></td> <td>Total 15</td> </tr> </table>	EAP 121	Advanced EAP for Multilingual Writers	4	MATH 108	Introductory Calculus with Business Applications	3	INYO 105	American Cultures	3	EAP 102	Language Support for American Cultures	1	BUS 100	Business and Society	3	INYO 100	Transition INTO Mason I	1			Total 15	<ul style="list-style-type: none"> 2.85 cumulative Mason GPA C or better in all courses No grades of NC, W or IN permitted
EAP 121	Advanced EAP for Multilingual Writers	4																					
MATH 108	Introductory Calculus with Business Applications	3																					
INYO 105	American Cultures	3																					
EAP 102	Language Support for American Cultures	1																					
BUS 100	Business and Society	3																					
INYO 100	Transition INTO Mason I	1																					
		Total 15																					
	Semester 2 Course Title Credit Hours	Notes																					
	<table border="1"> <tr> <td>ENGH 123</td> <td>Language-enhanced Composition for Multilingual Writers</td> <td>4</td> </tr> <tr> <td>COMM 101</td> <td>Fundamentals of Communication</td> <td>3</td> </tr> <tr> <td>EAP 101</td> <td>Language Support for Fundamentals of Communication</td> <td>1</td> </tr> <tr> <td>ECON 103</td> <td>Contemporary Microeconomic Principles</td> <td>3</td> </tr> <tr> <td>BUS 210¹</td> <td>Business Analytics I</td> <td>3</td> </tr> <tr> <td>INYO 102</td> <td>Transition INTO Mason II: Peer Supported</td> <td>1</td> </tr> <tr> <td colspan="2"></td> <td>Total 15</td> </tr> </table>	ENGH 123	Language-enhanced Composition for Multilingual Writers	4	COMM 101	Fundamentals of Communication	3	EAP 101	Language Support for Fundamentals of Communication	1	ECON 103	Contemporary Microeconomic Principles	3	BUS 210 ¹	Business Analytics I	3	INYO 102	Transition INTO Mason II: Peer Supported	1			Total 15	<ul style="list-style-type: none"> This course is offered to students beginning in the Fall term only. These courses are generally delivered through INTO Mason and are for Pathway students only.
ENGH 123	Language-enhanced Composition for Multilingual Writers	4																					
COMM 101	Fundamentals of Communication	3																					
EAP 101	Language Support for Fundamentals of Communication	1																					
ECON 103	Contemporary Microeconomic Principles	3																					
BUS 210 ¹	Business Analytics I	3																					
INYO 102	Transition INTO Mason II: Peer Supported	1																					
		Total 15																					
1-Semester Pathway	Degree Program Components																						
Fall: August 21, 2023 Spring: January 16, 2024	120 credit hour program 15 credit hours apply from Pathway 105 credit hours remaining toward degree																						
Entry Requirements	Semester 1 Course Title Credit Hours																						
<ul style="list-style-type: none"> High school diploma with 2.3 minimum high school GPA equivalent Language requirement: <ul style="list-style-type: none"> TOEFL iBT 70 (15 in all subscores) IELTS 6.0 (5.5 in all subscores) Duolingo 100 	<table border="1"> <tr> <td>ENGH 123</td> <td>Language-enhanced Composition for Multilingual Writers</td> <td>4</td> </tr> <tr> <td>MATH 108</td> <td>Introductory Calculus with Business Applications</td> <td>3</td> </tr> <tr> <td>BUS 100</td> <td>Business and Society</td> <td>3</td> </tr> <tr> <td>ECON 103</td> <td>Contemporary Microeconomic Principles</td> <td>3</td> </tr> <tr> <td>UNIV 100</td> <td>Introduction to Mason</td> <td>1</td> </tr> <tr> <td colspan="2"></td> <td>Total 14</td> </tr> </table>	ENGH 123	Language-enhanced Composition for Multilingual Writers	4	MATH 108	Introductory Calculus with Business Applications	3	BUS 100	Business and Society	3	ECON 103	Contemporary Microeconomic Principles	3	UNIV 100	Introduction to Mason	1			Total 14				
ENGH 123	Language-enhanced Composition for Multilingual Writers	4																					
MATH 108	Introductory Calculus with Business Applications	3																					
BUS 100	Business and Society	3																					
ECON 103	Contemporary Microeconomic Principles	3																					
UNIV 100	Introduction to Mason	1																					
		Total 14																					

business.gmu.edu/undergraduate



US Undergraduate Education System

To graduate with your 4-year undergraduate degree, you will need to take the following classes:

Core classes

General education courses can include English composition, social sciences, humanities, history, mathematics and natural/physical science.

These are typically taken at the beginning of your degree.

Major classes

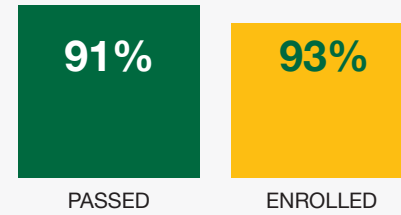
These classes will be about the specific field of study you choose. They are typically taken toward the last part of your degree.

The INTO Mason Advantage

George Mason University partners with INTO to create a support system for international students. We offer Academic English, International Year One, Undergraduate Transfer Program, Graduate Pathway and Graduate Bridge programs where you work alongside your American peers and earn credit toward your degree while improving your English skills. After successful completion of your program you will be able to progress to a Mason degree program.

INTO Mason is located on campus and provides students with many services including:

- Academic advising
- Cultural programming and social activities
- Free airport pickup
- Free tutoring and language support
- Housing assistance
- Orientation
- Visa and immigration support



INTO Mason Student Success

91% of all completed Pathway students were eligible to progress at Mason in 2020-2021. Eligible students are those who successfully completed the Pathway program and qualified for admission as degree-seeking students. Enrolled students are those who enrolled as degree-seeking students in their next term of degree study at George Mason University.

Undergraduate Transfer Program

Have you earned credits from an international college or university and want to transfer to a university in the United States? You can transfer directly into George Mason University or choose our Undergraduate Transfer Program (UTP), which is specifically designed to support international students through the process of transferring.

Why Choose UTP?

Choosing UTP provides a customized, cost-effective path to your bachelor's degree. Before your program starts, Mason will provide you with an estimate of credits that will transfer to the university. Once you arrive on campus, our friendly staff will be available to help you transition into life at a university in the United States. You will have access to helpful resources including academic, English language and cultural support. If you do not meet the English language entry requirements for the UTP, you can enter our Academic English program before progressing to either the UTP or direct transfer to Mason.

UTP Benefits

- Transfer of credits from your college or university-level classes to your degree
- Receive customized curriculum of university credit-bearing courses
- Quick turnaround time for offer (5-7 business days)
- Unofficial Pre-arrival Credit Evaluation (15 additional business days after receiving offer letter) and official credit evaluation during first semester at Mason
- Guaranteed progression to any undergraduate program available through International Year One
- Academic advising and support throughout the program including assistance transferring credit out of UTP into degree program

Entry Requirements**			
Program	Direct Transfer	UTP	
Program length	Varies	1-Semester	2-Semesters
Start Dates	Fall: Aug 2023 Spring: Jan 2024	Fall: Aug 21, 2023 Spring: Jan 16, 2024	
GPA	2.85	2.0*	
TOEFL iBT	80*** (18 in all subscores)	70 (75 for CEC)*** (15 in all subscores)	60*** (13 in all subscores)
IELTS	6.5 (6.0 in all subscores)	6.0*** (5.5 in all subscores)	5.5*** (5.0 in all subscores)
Duolingo	110	100	90
Minimum Transfer Credits	No minimum	1 credit-bearing university course	
Maximum Transfer Credits	2-year college: 75 4-year college: 90	90	

Entry requirements are subject to change and vary by program.
*GPA varies. Comprehensive review of application completed for UTP students.
**Courses completed 10+ years prior will not be included for majors within College of Engineering and Computing (CEC) or School of Business.
*** Subscores not required for the Engineering, Computing and Statistics programs.

UTP Start Dates		
Program	Fall: Aug 21, 2023	Spring: Jan 16, 2024
Business	🟢🟡	🟢🟡
Engineering, Computing and Statistics	🟢🟡	🟢🟡
General Exploratory	🟢🟡	🟢🟡
Human and Social Development	🟢🟡	🟢🟡
Humanities and Social Sciences	🟢🟡	🟢🟡
Science	🟢🟡	🟢🟡

🟢 1-Semester program 🟡 2-Semester program

Graduate Admissions

As a graduate student, you can pursue research among world-renowned faculty and access diverse career opportunities in the Washington, DC area. There are several paths to earn your master's degree at Mason.

Entry Requirements*			
Program	Direct	Graduate Pathway	
		1-SEMESTER	2-SEMESTER
Program requirements	<ul style="list-style-type: none"> • 4-year undergraduate degree or higher • GRE, GMAT and other tests not required, but optional in business programs • Additional materials may also be required (vary by program) 	4-year undergraduate degree	
Minimum GPA Equivalent	3.0	2.75	2.75
TOEFL iBT	88 (20 in all subscores)	80 (17 in all subscores)	70 (15 in all subscores)
IELTS	7.0 (6.5 in all subscores)	6.5 (6.0 in all subscores)	6.0 (5.5 in all subscores)
Duolingo	120	110	100
Academic English	Level 7	Level 6	Level 5

Notes: Entry requirements are subject to change and may vary by program. Some programs may require additional materials to apply.
*For all schools and colleges except the College of Engineering and Computing

Institutional Code TOEFL: 5827 GRE: 5827 GMAT: 5827

Entry Requirements - College of Engineering and Computing			
Program	Direct	Graduate Pathway	
		1-SEMESTER	2-SEMESTER
Program requirements	<ul style="list-style-type: none"> • 4-year undergraduate degree or higher • Additional materials may also be required (vary by program) 	4-year undergraduate degree	
Minimum GPA Equivalent	3.0	2.75	2.75
TOEFL iBT	80	75	65
IELTS	6.5	6.0	5.5
Duolingo	120	110	100
Academic English	Level 7	Level 6	Level 5

Notes: Entry requirements are subject to change and may vary by program. Some programs may require additional materials to apply. Subscores are not required for College of Engineering and Computing programs.

Dates		
Program	Direct	Graduate Pathway
Start Dates	Fall 2023: Aug 2023 Spring 2024: Jan 2024	Fall 2023: Aug 21, 2023 Spring 2024: Jan 16, 2024

How you start your program depends on your academic profile and your English level. How you finish your program is exactly how you pictured: graduating with a master's degree or PhD from Mason.

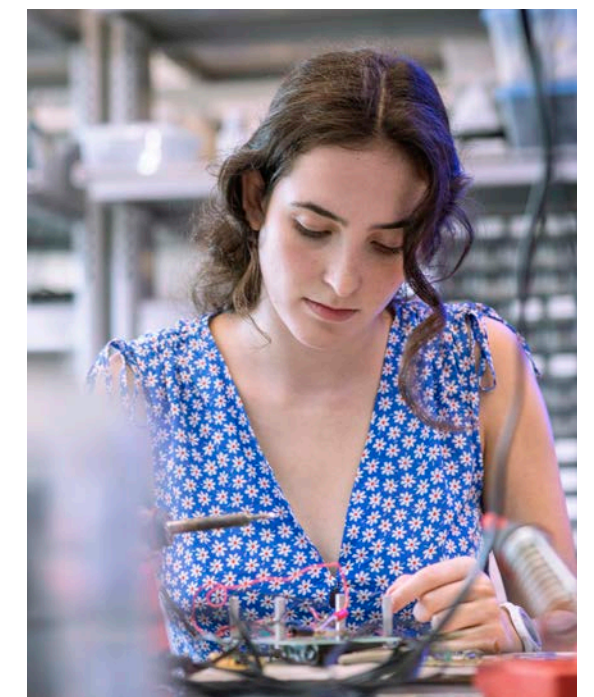
Direct Entry: If you meet the academic and English language requirements for your degree program, you can apply directly to Mason.

To apply, you will need the following required documents: declarations, university transcripts, proof of degree, accounting of time, passport, English test score and personal statement. An application fee may apply. Additional requirements such as previous work experience and a portfolio are required for select programs.

Graduate degrees are competitive, and an extensive review of your application will be done. Please expect a longer turnaround for an admissions decision. For more information, visit catalog.gmu.edu/admissions/international-students

Graduate Pathway: Our Graduate Pathways allow you to begin earning credits toward your degree even if you do not meet the academic and English requirements for direct entry. The program will help build the academic foundation and essential English language skills you need to successfully progress to your master's degree. For more information, visit www.intostudy.com/mason/programs

English Language Program: If you do not meet the direct or Graduate Pathway program entry language requirements, you can enter our Academic English program to improve your academic and language skills. Once you have achieved the required language level, you can progress to a Graduate Pathway program or enter your degree program directly. Learn more on page 21.



Graduate Pathway Programs

*Estimated credits remaining after Pathway/Total credit hours needed to complete degree.

Semester	Start Dates		Credits*	Entry Requirements			Progression Requirements All GPAs are minimum cumulative			
	Fall	Spring		GPA	Undergraduate Degree	TOEFL iBT	IELTS	Duolingo	GPA	Other
Accounting										
3-Semester	•	•	30/30	2.75	4-year undergraduate degree in accounting or equivalent.	60 (13 in all subscores)	5.5 (5.5 in all subscores)	90	3.0	<ul style="list-style-type: none"> • B or better in all courses. • No grades of NC, W, or IN permitted. • 2 letters of recommendation, preferably one from a School of Business faculty member. • Statement of purpose.
2-Semester	•	•	30/30			70 (15 in all subscores)	6.0 (5.5 in all subscores)	100		
Applied and Engineering Physics [Concentrations: Standard Physics; Applied Physics; Engineering Physics; Quantum Information Science and Engineering]										
2-Semester	•	•	24/30	2.75	4-year undergraduate degree or equivalent in physics or applied physics.	70 (15 in all subscores)	6.0 (5.5 in all subscores)	100	3.0	<ul style="list-style-type: none"> • B or better in all courses. • No grades of NC, W, or IN permitted. • Statement of purpose. • 3 letters of recommendation.
1-Semester	•	•	24/30			80 (17 in all subscores)	6.5 (6.0 in all subscores)	110		
Applied Information Technology [MS concentrations: Cyber Security; Cyber-Human Systems; Data Analytics and Intelligence Method; IT Management; Machine Learning Engineering]										
2-Semester	•	•	24/30	2.75	4-year undergraduate degree or equivalent in computer science, information technology or related technical or management fields	65	5.5	100	3.0	<ul style="list-style-type: none"> • B or better in all course work. • No grades of NC, W, or IN permitted. • Statement of purpose. • 2 letters of recommendation.
1-Semester	•	•	24/30			75	6.0	110		
Arts Management										
2-Semester	•	•	25/36	2.75	4-year undergraduate degree or equivalent in related field (theater, music performance, conducting, literature, dance, art history, film studies, studio art and graphic design, arts management, cultural management, marketing/communications and management/business)	70 (15 in all subscores)	6.0 (5.5 in all subscores)	100	3.0	<ul style="list-style-type: none"> • B or better in all courses. • No Grades of NC, W, or IN permitted. • 1 recommendation from Arts Management Program Director. • Statement of purpose.
Bioengineering										
2-Semester	•	•	24-27/30-33	2.75	4-year undergraduate degree or equivalent in Bioengineering or related field	65	5.5	100	3.0	<ul style="list-style-type: none"> • B or better in all courses. • No grades of NC, W, or IN permitted. • Statement of purpose. • 3 letters of recommendation.
1-Semester	•	•	24-27/30-33			75	6.0	110		
Bioinformatics and Computational Biology										
2-Semester	•	•	25/31	2.75	4-year undergraduate degree or equivalent in biology, mathematics, statistics or bioengineering	70 (15 in all subscores)	6.0 (5.5 in all subscores)	100	3.0	<ul style="list-style-type: none"> • B or better in all courses. • No grades of NC, W, or IN permitted. • Statement of purpose. • 3 letters of recommendation.
1-Semester	•	•	25/31			80 (17 in all subscores)	6.5 (6.0 in all subscores)	110		
Bioinformatics Management										
2-Semester	•	•	24/30	2.75	4-year undergraduate degree or equivalent in biology, mathematics, statistics or bioengineering	70 (15 in all subscores)	6.0 (5.5 in all subscores)	100	3.0	<ul style="list-style-type: none"> • B or better in all courses. • No grades of NC, W, or IN permitted. • Statement of purpose. • 3 letters of recommendation.
1-Semester	•	•	24/30			80 (17 in all subscores)	6.5 (6.0 in all subscores)	110		
Biostatistics										
2-Semester	•	•	30/36	2.75	<ul style="list-style-type: none"> • 4-year undergrad degree in any field which includes course work in multivariable calculus, matrix or linear algebra, statistics and calculus-based probability. • Students must have completed the equivalent to the following courses: MATH 113, 114, 213, 203 	65	5.5	100	3.0	<ul style="list-style-type: none"> • B or better in all courses. • No grades of NC, W, or IN permitted. • Statement of purpose. • 2 letters of recommendation.
1-Semester	•	•	30/36			75	6.0	110		
Business Administration (MBA) [Emphases: Accounting; Business Analytics; Entrepreneurship; Financial Management; International Business; Leadership; Marketing; Project Management; Government Contracting]										
2-Semester	•	•	42/48	2.75	<ul style="list-style-type: none"> • 4-year undergraduate degree or equivalent • Work experience does not need to be business-based and can include teaching, military service or government experience • The program requires the equivalent of two years of post-graduate full-time professional work experience 	70 (15 in all subscores)	6.0 (5.5 in all subscores)	100	3.0	<ul style="list-style-type: none"> • B or better in all courses. • No grades of NC, W, or IN permitted. • 2 letters of recommendation, preferably one from a School of Business faculty member. • Statement of purpose.
1-Semester	•	•	45/48			80 (17 in all subscores)	6.5 (6.0 in all subscores)	110		
Civil and Infrastructure Engineering [MS concentrations: Construction Engineering and Management; Environmental and Water Resources Engineering; Geotechnical Engineering; Structural Engineering; Transportation Engineering]										
2-Semester	•	•	24/30	2.75	<ul style="list-style-type: none"> • 4-year undergraduate degree or equivalent • Relevant undergraduate degrees vary depending on specific program concentration.† 	65	5.5	100	3.0	<ul style="list-style-type: none"> • B or better in all courses. • No grades of NC, W, or IN permitted. • Statement of purpose. • 2 letters of recommendation.
1-Semester	•	•	24/30			75	6.0	110		
Communication [MA specializations: Science Communication; Strategic Communication/Public Relations; Health Communication; Individualized]										
2-Semester	•	•	24/33	2.75	4-year undergraduate degree or equivalent	70 (15 in all subscores)	6.0 (5.5 in all subscores)	100	3.0	<ul style="list-style-type: none"> • B or better in all courses. • No grades of NC, W, or IN permitted. • Statement of purpose. • 2 letters of recommendation.
1-Semester	•	•	27/33			80 (17 in all subscores)	6.5 (6.0 in all subscores)	110		
Computational Science										
2-Semester	•	•	24/30	2.75	4-year undergraduate degree or equivalent in mathematics or statistics	70 (15 in all subscores)	6.0 (5.5 in all subscores)	100	3.0	<ul style="list-style-type: none"> • B or better in all courses. • No grades of NC, W, or IN permitted. • Statement of purpose. • 3 letters of recommendation.
1-Semester	•	•	24/30			80 (17 in all subscores)	6.5 (6.0 in all subscores)	110		

Entry and progression requirements are subject to change and may vary by program.

✓ Indicates a program that has the option of choosing no concentration.

**To see the full list of courses please visit partnerportal.intoglobal.com/Course-Information/george-mason-university/graduate-pathway-in-biostatistics

†Please view accepted degrees at partnerportal.intoglobal.com/University-Information/george-mason-university

Semester	Start Dates		Credits*	Entry Requirements			Progression Requirements All GPAs are minimum cumulative			
	Fall	Spring		GPA	Undergraduate Degree	TOEFL iBT	IELTS	Duolingo	GPA	Other
Computer Engineering [Computer Architecture and Embedded Systems; Computer Networks, Digital Signal Processing; Digital System Design; Hardware Security and Cryptographic Engineering; Internet of Things and Network Security; Machine Learning and Intelligent Computing Architectures; Space-Based Systems]										
2-Semester	•	•	24/30	2.75	4-year undergraduate degree or equivalent in computer engineering, computer science, electrical engineering, electronics and communications, electronic engineering or a closely related discipline from an accredited program	65	5.5	100	3.0	<ul style="list-style-type: none"> • B or better in all courses. • No grades of NC, W, or IN permitted. • Statement of purpose. • 2 letters of recommendation.
1-Semester	•	•	24/30			75	6.0	110		
Computer Science [MS concentrations: Cyber Security; Machine Learning]										
2-Semester	•	•	24/30	2.75	<ul style="list-style-type: none"> • 4-year undergrad degree in computer science, computer engineering, software engineering or mathematics. • Degree must include Data Structures and Algorithms, Automata Theory and Formal Languages, Computer Architecture, including Assembly Language • Completion of Calculus I and II and a course in discrete mathematics 	65	5.5	100	3.0	<ul style="list-style-type: none"> • B or better in all course work. • No grades of NC, W, or IN permitted. • Statement of purpose. • 2 letters of recommendation.
1-Semester	•	•	24/30			75	6.0	110		
Conflict Analysis and Resolution [MS concentrations: Conflict-Sensitive Development and Resilience; Dynamics of Violence; Inclusive Conflict Engagement; Individualized; Media, Narrative and Public Discourse; Social Justice Advocacy and Activism; Peacebuilding]										
2-Semester	•	•	30/42	2.75	4-year undergraduate degree or equivalent	70 (15 in all subscores)	6.0 (5.5 in all subscores)	100	3.0	<ul style="list-style-type: none"> • B or better in all courses. • No grades of NC, W, or IN permitted. • Statement of purpose. • 2 letters of recommendation.
1-Semester	•	•	36/42			80 (17 in all subscores)	6.5 (6.0 in all subscores)	110		
Curriculum and Instruction [MED concentrations Early Childhood and Elementary Education]										
2-Semester	•	•	21/30	2.75	4-year undergraduate degree or equivalent	70 (15 in all subscores)	6.0 (5.5 in all subscores)	100	3.0	<ul style="list-style-type: none"> • B or better in all courses. • No grades of NC, W, or IN permitted. • Statement of purpose. • 2 letters of recommendation.
1-Semester	•	•	24/30			80 (17 in all subscores)	6.5 (6.0 in all subscores)	110		
Cyber Security Engineering										
2-Semester	•	•	24/30	2.75	Four-year undergraduate degree in computer science, engineering, or equivalent in a related field	65	5.5	100	3.0	<ul style="list-style-type: none"> • B or better in all course work. • No grades of NC, W, or IN permitted. • Statement of purpose. • 2 letters of recommendation.
1-Semester	•	•	24/30			75	6.0	110		
Data Analytics Engineering [MS concentrations: Applied Analytics; Bioengineering; Business Analytics; Computational Linguistics; Cyber Analytics; Data Mining; Financial Engineering; Health Data Analytics; Internet of Things; Mechanical Engineering; Naval Engineering; Predictive Analytics; Statistical Analytics; Individualized]										
2-Semester	•	•	24/30	2.75	<ul style="list-style-type: none"> • 4-year undergraduate degree in engineering, business, computer science, statistics, mathematics or information technology • Applicants may demonstrate strong work experience with data or analytics instead of related degree 	65	5.5	100	3.0	<ul style="list-style-type: none"> • B or better in all courses. • No grades of NC, W, or IN permitted. • Statement of purpose. • 2 letters of recommendation.
1-Semester	•	•	24/30			75	6.0	110		
Digital Forensics [MS concentration ✓ : Penetration Testing/Reverse Engineering]										
2-Semester	•	•	24/30	2.75	<ul style="list-style-type: none"> • 4-year undergrad degree or equivalent in Computer Science, Computer Engineering, IT, Business, Economics or related field. • Completion of course work in: TCP/IP; Computer Operating Systems, Computer Networking and Network Routing. 	65	5.5	100	3.0	<ul style="list-style-type: none"> • B or better in all courses. • No grades of NC, W, or IN permitted. • Statement of purpose. • 3 letters of recommendation.
1-Semester	•	•	24/30			75	6.0	110		
Earth Systems Science										
2-Semester	•	•	21/30	2.75	4-year undergraduate degree or equivalent in earth systems or science, geography, geology, astronomy, meteorology, computer and information systems, forestry cultivation, forest engineering, petroleum and gas engineering, zoology.	70 (15 in all subscores)	6.0 (5.5 in all subscores)	100	3.0	<ul style="list-style-type: none"> • B or better in all courses. • No grades of NC, W, or IN permitted. • Letter of recommendation from ESS Faculty Advisor. • Statement of purpose.
1-Semester	•	•	24/30			80 (17 in all subscores)	6.5 (6.0 in all subscores)	110		
Economics										
2-Semester	•	•	21/30	2.75	4-year undergraduate degree or equivalent	70 (15 in all subscores)	6.0 (5.5 in all subscores)	100	3.0	<ul style="list-style-type: none"> • B or better in all courses. • No grades of NC, W, or IN permitted. • Statement of purpose. • 2 letters of recommendation.
1-Semester	•	•	24/30			80 (17 in all subscores)	6.5 (6.0 in all subscores)	110		
Educational Psychology [MS concentrations: Assessment, Evaluation and Testing; Learning, Cognition and Motivation]										
2-Semester	•	•	21/30	2.75	4-year undergraduate degree or equivalent	70 (15 in all subscores)	6.0 (5.5 in all subscores)	100	3.0	<ul style="list-style-type: none"> • B or better in all courses. • No grades of NC, W, or IN permitted. • Statement of purpose. • 2 letters of recommendation.
1-Semester	•	•	24/30			80 (17 in all subscores)	6.5 (6.0 in all subscores)	110		
Electrical Engineering [MS concentrations: Bioengineering; Communications and Networking; Control and Robotics; Electronics; Machine Learning in Electrical Engineering; Power Systems and Smart Grid; Signal Processing; Space-Based Systems; Individualized]										
2-Semester	•	•	24-30/30-36	2.75	4-year undergraduate degree or equivalent in electrical engineering, electronics and communications, electronic engineering, computer engineering, or a closely related discipline	65	5.5	100	3.0	<ul style="list-style-type: none"> • B or better in all courses. • No grades of NC, W, or IN permitted. • Statement of purpose. • 2 letters of recommendation.
1-Semester	•	•	24-30/30-36			75	6.0	110		
English [MA concentrations: Linguistics]										
2-Semester	•	•	30/36	2.75	<ul style="list-style-type: none"> • 4-year undergraduate degree or equivalent in related field. • Related fields include English, ESL, linguistics and language acquisition. 	70 (15 in all subscores)	6.0 (5.5 in all subscores)	100	3.0	<ul style="list-style-type: none"> • B or better in all courses. • No grades of NC, W, or IN permitted. • Statement of purpose. • 2 letters of recommendation.
1-Semester	•	•	31/37			80 (17 in all subscores)	6.5 (6.0 in all subscores)	110		
Environmental Science and Policy [MS concentrations: Aquatic Ecology; Conservation Science and Policy; Environmental Science and Policy; Communication for Environmental Science, Policy and Human Behavior; Environment and Management; Energy and Sustainability Policy and Science; Conservation Medicine and Planetary Health]										
2-Semester	•	•	37/37	2.75	<ul style="list-style-type: none"> • 4-year undergraduate degree or equivalent in related field. • Related fields include environmental studies, earth science, biology, ecology, botany, and sustainability studies. 	70 (15 in all subscores)	6.0 (5.5 in all subscores)	100	3.0	<ul style="list-style-type: none"> • B or better in all courses. • No grades of NC, W, or IN permitted. • Statement of purpose. • 3 letters of recommendation.
1-Semester	•	•	31/37			80 (17 in all subscores)	6.5 (6.0 in all subscores)	110		

Entry and progression requirements are subject to change and may vary by program.

✓ Indicates a program that has the option of choosing no concentration.

Graduate Pathway Programs (continued) *Estimated credits remaining after Pathway/Total credit hours needed to complete degree.

Semester	Start Dates		Credits*	Entry Requirements			Progression Requirements All GPAs are minimum cumulative			
	Fall	Spring		GPA	Undergraduate Degree	TOEFL IBT	IELTS	Duolingo	GPA	Other
Forensic Science [MS concentrations: Crime Scene Investigation; Forensic Biology Analysis; Forensic Chemistry Analysis; Forensic/Biometric Identity Analysis]										
2-Semester	•	•	27/36	2.75	4-year undergraduate degree or equivalent in related field. • Related fields include criminology and psychology; successful students in this major have diverse science and social science-related backgrounds.	70 (15 in all subscores)	6.0 (5.5 in all subscores)	100	3.0	• B or better in all courses. • No grades of NC, W, or IN permitted. • Statement of purpose. • 3 letters of recommendation.
1-Semester	•	•	30/36			80 (17 in all subscores)	6.5 (6.0 in all subscores)	110		
Geographic and Cartographic Sciences										
2-Semester	•	•	20-26/30-36	2.75	4-year undergraduate degree or equivalent in earth systems or science, geography, geology, civil engineering, computer science, computer and information systems, geomatics engineering, information engineering.	70 (15 in all subscores)	6.0 (5.5 in all subscores)	100	3.0	• B or better in all courses. • No grades of NC, W, or IN permitted. • Statement of purpose. • 1 letter of recommendation form GCS Faculty Advisor.
1-Semester	•	•	24-30/30-36			80 (17 in all subscores)	6.5 (6.0 in all subscores)	110		
Global Affairs [MA specializations: Global Conflict and Security; Global Culture and Society; Global Economics and Development; Global Education; Global Governance and Public Management; Global Health; Global Media and Information Technology; Global Population and Geography]										
2-Semester	•	•	21/30	2.75	4-year undergraduate degree or equivalent	70 (15 in all subscores)	6.0 (5.5 in all subscores)	100	3.0	• B or better in all courses. • No grades of NC, W, or IN permitted. • Statement of purpose. • 2 letters of recommendation.
1-Semester	•	•	24/30			80 (17 in all subscores)	6.5 (6.0 in all subscores)	110		
Global Commerce and Policy [MA concentrations: Global Development and Governance; Global Finance, Investment and Trade; Global Risk and Strategy]										
2-Semester	•	•	27/36	2.75	4-year undergraduate degree or equivalent	70 (15 in all subscores)	6.0 (5.5 in all subscores)	100	3.0	• B or better in all courses. • No grades of NC, W, or IN permitted. • Statement of purpose. • 2 letters of recommendation.
Health Informatics [MS concentrations: Health Data Analytics; Health Informatics Management; Population Health Informatics]										
2-Semester	•	•	28-33/34-39	2.75	4-year undergraduate degree or equivalent in related field. • Related fields include information systems, health policy and health services.	70 (15 in all subscores)	6.0 (5.5 in all subscores)	100	3.0	• B or better in all courses. • No grades of NC, W, or IN permitted. • Statement of purpose. • 2 letters of recommendation.
1-Semester	•	•	28-33/34-39			80 (17 in all subscores)	6.5 (6.0 in all subscores)	110		
Health Systems Management [MHA concentrations: Healthcare Quality, Healthcare Policy; Executive]										
2-Semester	•	•	40-41/46-47	2.75	4-year undergraduate degree or equivalent in related field. • Related fields include public administration, health policy, health services, business, economics and nursing.	70 (15 in all subscores)	6.0 (5.5 in all subscores)	100	3.0	• B or better in all courses. • No grades of NC, W, or IN permitted. • Statement of purpose. • 2 letters of recommendation.
1-Semester	•	•	40-41/46-47			80 (17 in all subscores)	6.5 (6.0 in all subscores)	110		
Information Security and Assurance [MS concentrations: Network and System Security; Applied Cyber Security]										
2-Semester	•	•	24/30	2.75	4-year undergraduate degree in computer science or related field (computer science or computer engineering, software engineering and mathematics). • Degree must include Data Structures and Algorithms, Automata Theory and Formal Languages, Computer Architecture, including Assembly Language. • Completion of Calculus I and II and a course in discrete mathematics	65	5.5	100	3.0	• B or better in all courses. • No grades of NC, W, or IN permitted. • Statement of purpose. • 2 letters of recommendation.
1-Semester	•	•	24/30			75	6.0	110		
Information Systems [MS concentrations: Human-Centered Computing; Cloud-based Information Systems]										
2-Semester	•	•	24/30	2.75	4-year undergraduate degree in related field (computer science, computer engineering, software engineering and mathematics). • Courses including Data Structures and Algorithms, Automata Theory and Formal Languages, Computer Architecture, Assembly Language with min of B. • Completion of Calculus I and II and course in discrete mathematics	65	5.5	100	3.0	• B or better in all courses. • No grades of NC, W, or IN permitted. • Statement of purpose. • 2 letters of recommendation.
1-Semester	•	•	24-27/30			75	6.0	110		
Management										
2-Semester	•	•	30/36	2.75	4-year undergraduate degree or equivalent	70 (15 in all subscores)	6.0 (5.5 in all subscores)	100	3.0	• B or better in all courses. • No grades of NC, W, or IN permitted. • 2 letters of recommendation, preferably one from a School of Business faculty member. • Statement of purpose.
1-Semester	•	•	33/36			80 (17 in all subscores)	6.5 (6.0 in all subscores)	110		
Mathematics										
2-Semester	•	•	24-30/30	2.75	4-year undergraduate degree or equivalent in mathematics or statistics	70 (15 in all subscores)	6.0 (5.5 in all subscores)	100	3.0	• B or better in all courses. • No grades of NC, W, or IN permitted. • 2 letters of recommendation.
Music [MM concentrations: Jazz Studies; Performance]										
2-Semester	•	•	20/30	2.75	4-year undergraduate degree or equivalent in music performance, conducting, ethnomusicology, music education, music theory, composition or jazz studies. • Audition (Video recordings must be submitted at the time of application) ¹	70 (15 in all subscores)	6.0 (5.5 in all subscores)	100	3.0	• B or better in all courses. • No grades of NC, W, or IN permitted. • Statement of purpose. • 2 letters of recommendation.
1-Semester	•	•	23/30			80 (17 in all subscores)	6.5 (6.0 in all subscores)	110		
Nutrition [MS concentrations: Community Nutrition; Dietetics]										
2-Semester	•	•	33/39	2.75	4-year undergraduate degree or equivalent in related field • Related fields include nursing, health sciences, agricultural studies, public health and education	70 (15 in all subscores)	6.0 (5.5 in all subscores)	100	3.0	• B or better in all courses. • No grades of NC, W, or IN permitted. • Statement of purpose. • 2 letters of recommendation.
1-Semester	•	•	36/39			80 (17 in all subscores)	6.5 (6.0 in all subscores)	110		
Operations Research [MS concentrations: Data Analytics; Financial Engineering; Military Operations Research; Optimization; Stochastic Models; Individualized]										

Entry and progression requirements are subject to change and may vary by program.

✓ Indicates a program that has the option of choosing no concentration.

¹For specific audition requirements, please visit partnerportal.intoglobal.com/Course-Information/george-mason-university/graduate-pathway-in-music

Semester	Start Dates		Credits*	Entry Requirements			Progression Requirements All GPAs are minimum cumulative			
	Fall	Spring		GPA	Undergraduate Degree	TOEFL IBT	IELTS	Duolingo	GPA	Other
2-Semester	•	•	24-27/30-33	2.75	4-year undergraduate degree or equivalent in engineering, mathematics, computer science, physical sciences or economics. • Completion of following courses required: multivariate calculus, linear algebra, calculus-based probability and statistics and a computer programming course with B or better	65	5.5	100	3.0	• B or better in all course work. • No grades of NC, W, or IN permitted. • Statement of purpose. • Letter of recommendation.
1-Semester	•	•	24-27/30-33			75	6.0	110		
Public Health [MPH concentrations: Community Health Promotion; Epidemiology; Food Security and Nutrition; Global Health; Health Equity and Social Justice; Health Policy; Public Health Communication; Public Health Practice (100% online only)]										
2-Semester	•	•	33/42	2.75	4-year undergraduate degree in a health-related field or equivalent	70 (15 in all subscores)	6.0 (5.5 in all subscores)	100	3.0	• B or better in all courses. • No grades of NC, W, or IN permitted. • Statement of purpose. • 2 letters of recommendation.
1-Semester	•	•	36/42			80 (17 in all subscores)	6.5 (6.0 in all subscores)	110		
Public Policy										
2-Semester	•	•	27-30/36-39	2.75	4-year undergraduate degree or equivalent	70 (15 in all subscores)	6.0 (5.5 in all subscores)	100	3.0	• B or better in all courses. • No grades of NC, W, or IN permitted. • Statement of purpose. • 2 letters of recommendation.
Real Estate Development										
2-Semester	•	•	30/36	2.75	4-year undergraduate degree • 2 years postgraduate full time professional work experience (including business, teaching, military service or government experience)	70 (15 in all subscores)	6.0 (5.5 in all subscores)	100	3.0	• B or better in all courses. • No grades of NC, W, or IN permitted. • 2 letters of recommendation, preferably one from a School of Business faculty member. • Statement of purpose.
1-Semester	•	•	33/36			80 (17 in all subscores)	6.5 (6.0 in all subscores)	110		
Social Work [MSW specializations: Children, Youth, and Families; Adults and Healthy Aging]										
2-Semester	•	•	54/60	2.75	4-year undergraduate degree or equivalent with 30 credits of general studies or liberal arts course work	70 (15 in all subscores)	6.0 (5.5 in all subscores)	100	3.0	• B or better in all courses. • No grades of NC, W, or IN permitted. • Statement of purpose. • 3 letters of recommendation.
Software Engineering										
2-Semester	•	•	24/30	2.75	4-year undergraduate degree or equivalent in computer science or a related field. • Degree must include Data Structures and Algorithms, Automata Theory and Formal Languages and Computer Architecture, including Assembly Language. • Completion of Calculus I and II and a discrete mathematics course	65	5.5	100	3.0	• B or better in all courses. • No grades of NC, W, or IN permitted. • Statement of purpose. • 2 letters of recommendation.
1-Semester	•	•	24/30			75	6.0	110		
Special Education [MEd concentrations: Early Childhood Special Education]										
2-Semester	•	•	21/30	2.75	4-year undergraduate degree or equivalent	70 (15 in all subscores)	6.0 (5.5 in all subscores)	100	3.0	• B or better in all courses. • No grades of NC, W, or IN permitted. • Statement of purpose. • 2 letters of recommendation.
1-Semester	•	•	24/30			80 (17 in all subscores)	6.5 (6.0 in all subscores)	110		
Sport and Recreation Studies [MS concentrations: Recreation Administration; Sport and Leisure Studies; Sport Management]										
2-Semester	•	•	21/30	2.75	4-year undergraduate degree or equivalent	70 (15 in all subscores)	6.0 (5.5 in all subscores)	100	3.0	• B or better in all courses. • No grades of NC, W, or IN permitted. • Statement of purpose. • 2 letters of recommendation.
1-Semester	•	•	24/30			80 (17 in all subscores)	6.5 (6.0 in all subscores)	110		
Statistical Science										
2-Semester	•	•	24/30	2.75	4-year undergraduate degree in any field which includes course work in multivariable calculus, matrix or linear algebra, statistics and calculus-based probability. • Students must have completed the equivalent to the following courses: MATH 113, 114, 213, 203 or 321, STAT 250 or 344, 346 or MATH 351 with an equivalent of C or better	65	5.5	100	3.0	• B or better in all courses. • No grades of NC, W, or IN permitted. • Statement of purpose. • 2 letters of recommendation.
1-Semester	•	•	24/30			75	6.0	110		
Systems Engineering [MS concentrations: Advanced Transportation Systems; Command, Control, Communications, Computing, Intelligence and Cyber; Digital Engineering and System Architecture; Energy Systems; Financial Systems Engineering; Systems Engineering and Data Analytics; Systems Engineering of Software-Intensive Systems; Systems Management]										
2-Semester	•	•	24-27/30-33	2.75	4-year undergraduate degree in engineering, mathematics, computer science, physical sciences or economics. • Completion of multivariate calculus, linear algebra, calculus-based probability and statistics and a computer programming course with an equivalent of B or better required	65	5.5	100	3.0	• B or better in all course work. • No grades of NC, W, or IN permitted. • Statement of purpose. • Letter of recommendation.
1-Semester	•	•	24-27/30-33			75	6.0	110		
Telecommunications [MS concentrations: Network Technologies, Network Forensics and Security]										
2-Semester	•	•	24/30	2.75	4-year undergraduate degree or equivalent	65	5.5	100	3.0	• B or better in all courses. • No grades of NC, W, or IN permitted. • Statement of purpose. • 2 letters of recommendation.
1-Semester	•	•	24/30			75	6.0	110		

Entry and progression requirements are subject to change and may vary by program.

✓ Indicates a program that has the option of choosing no concentration.

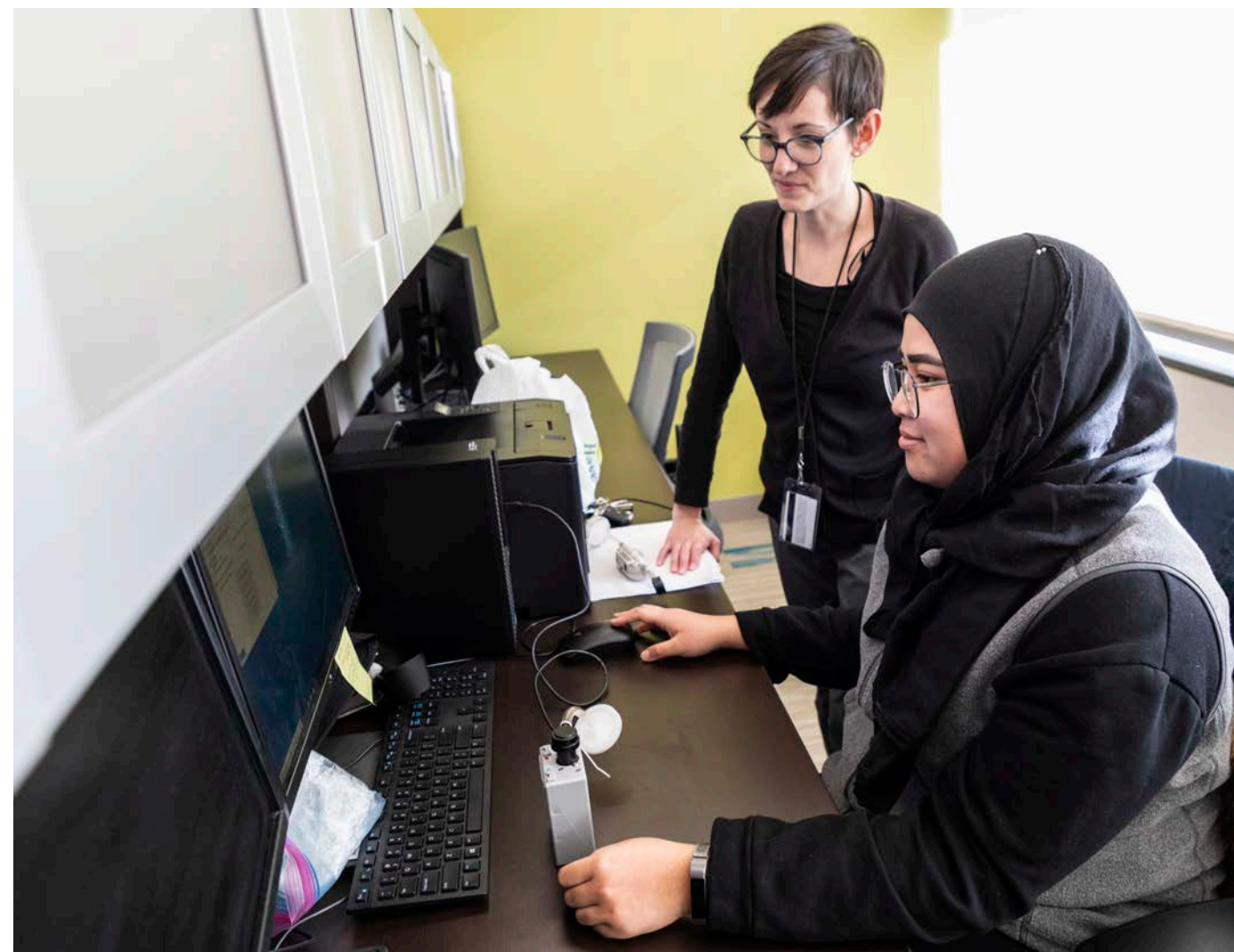
Bridge Program

The Bridge Program provides two semesters of advanced graduate preparation to students holding a select three-year international undergraduate degree. You can begin taking classes in your master's program while completing general education requirements needed for graduate school at Mason. To view all participating Bridge Programs and entry requirements visit www.intostudy.com/mason/programs

Semester	Start Dates		Credits*	Entry Requirements			Progression Requirements All GPAs are minimum cumulative			
	Fall	Spring		GPA	Relevant UG degree	TOEFL	IELTS	Duolingo	GPA	Other
Business Administration (MBA)										
2-Semester Bridge	•	•	Most Bridge pathways allow 6 credits to transfer to the student's degree program after the pathway	2.8	3-year undergraduate degree or equivalent; the equivalent of two years of post-graduate full-time professional work experience; work experience does not need to be business based and can include teaching, military service, and government experience	80 (17 in all subscores)	6.5 (6.0 in all subscores)	110	3.0	<ul style="list-style-type: none"> B or better in all course work 2 recommendation forms Statement of purpose
Engineering and related										
2-Semester Bridge	•	•	Most Bridge pathways allow 6 credits to transfer to the student's degree program after the pathway	2.75	Admission to Bridge pathways follows the same UG degree requirements as standard 1- and 2-term pathways.	75	6.0	110	3.0	<ul style="list-style-type: none"> B or better in all course work Statement of purpose 2 recommendation forms
Non-engineering										
2-Semester Bridge	•	•	Most Bridge pathways allow 6 credits to transfer to the student's degree program after the pathway	2.75	Admission to Bridge pathways follows the same UG degree requirements as standard 1- and 2-term pathways.	80 (17 in all subscores)	6.5 (6.0 in all subscores)	110	3.0	<ul style="list-style-type: none"> B or better in all course work Statement of purpose 2 recommendation forms

* Estimated credits remaining after Pathway/Total credit hours needed to complete degree.

** Not every Bridge program has both fall and spring starts, see 1- and 2-term pathway as Bridge follows the same start dates as those.



Academic English

Our Academic English program prepares you for the university degree by improving your English language skills and providing you with the academic tools you need to succeed. Students like you will learn English in and out of the classroom and you will be taught by our qualified and experienced faculty. You will have a chance to practice your English during your everyday life with native speakers. On top of that, you will receive customized support for international students to help you transition to life at a university in the United States.

What You Will Learn

- Understand US values in an academic setting
- Present spoken and written ideas accurately and effectively in English
- Write research papers with proper use of citations and references
- Read, understand and critically evaluate academic texts
- Understand and use vocabulary common to academic disciplines
- Take useful and accurate notes in academic lectures and presentations

Academic Study Plan Calculator

Our Academic Study Plan Calculator will help you estimate your study plan. Simply add your academic program and English scores and receive an estimated study plan showing your duration of study. <https://estimateus.intostudy.com/>

Assured Study Plan

If you submit your TOEFL or IELTS scores before arrival, you won't be required to change to a lower level after taking the Academic English placement tests once you arrive on campus. We will advise you on what level would be best for you based on your English skills. However, after advising you can choose to stay in the level shown on your original study plan.

For more information, visit into.gmu.edu/programs/academic-english



Accredited by **CEA**

Key Program Facts

- High school diploma required
- Minimum age 17 (students under 17 can be accepted on case-by-case basis)
- No English language requirement; students will be assessed and placed upon arrival
- Program length 16 weeks (11 weeks in summer)
- 18-20 hours of instruction per week (25 hours in summer)
- Minimum enrollment 1 semester
- 7 levels of instruction from beginner to advanced

Progression Requirements

- International Year One 3-Semester Pathway**
Completion of Academic English Core and Oral Communication Skills Level 3 or higher
- International Year One 2-Semester Pathway and 2-Semester Undergraduate Transfer Program**
Completion of Academic English Core and Oral Communication Skills Level 4 or higher
- International Year One 1-Semester Pathway and 1-Semester Undergraduate Transfer Program**
Completion of Academic English Core and Oral Communication Skills Level 5 or higher
- Direct Undergraduate Admission**
Completion of Academic English Core and Oral Communication Skills Level 6 or higher
- Graduate 2-Semester Pathway**
Completion of Academic English Core and Oral Communication Skills Level 5 or higher
- Graduate 1-Semester Pathway and Bridge Program**
Completion of Academic English Core and Oral Communication Skills Level 6 or higher
- Direct Graduate Admission**
Completion of Academic English Core and Oral Communication Skills Level 7 or higher

Start Dates for Academic English

Fall 2023	Spring 2024	Summer 2024
Aug 28, 2023	Jan 22, 2024	May 20, 2024



Find out more at

www.intostudy.com/mason/academic-english

Invest in your degree.
Invest in your future.
Invest in you.

With a strong foundation and on-the-job experiences, your education can determine how far you go in your career. Based on your program, you will receive the level of support that corresponds to your academic profile, English language scores and budget.

Whether you're enrolled in our Pathway programs, International Year One, Undergraduate Transfer Program and Academic English, you will have access to our Pre-arrival Success Services and airport pickup when you arrive.

All prices are estimated from 2022-23 and are subject to change. Please visit www.intostudy.com/en/mason/costs for exact pricing.

What do students get out of campus housing? Enrich your US university experience by living on campus. See page 4.

For details about Terms and Conditions, Country Scales and English Waivers, visit www.intostudy.com/mason/terms

Programs

There are two main semesters per academic year ((fall, spring), each 16 weeks long with a shorter summer semester of 11 weeks.

Scholarships

Find out more about scholarships www.intostudy.com/mason/scholarships

Undergraduate

Program Length	International Year One or Undergraduate Transfer Program			Undergraduate Direct Entry	
	1 Semester	2 Semesters	3 Semesters [†] <i>(Not available for UTP)</i>	1 Semester	2 Semesters
Tuition and Fees	\$24,540	\$42,670	\$53,350	\$19,770	\$39,170
Housing	\$5,550	\$11,100	\$16,650	\$4,710	\$9,420
Meals	\$3,340	\$6,680	\$10,020	\$2,840	\$5,680
Insurance	\$1,310	\$3,440	\$3,440	\$1,240	\$3,260

Graduate

Program Length	Graduate/Bridge Pathway			Graduate Direct Entry	
	1 Semester	2 Semesters	3 Semesters [†]	1 Semester	2 Semesters
Tuition and Fees	\$24,540	\$42,670	\$53,350	\$17,560	\$35,060
Insurance	\$1,310	\$3,440	\$3,440	\$1,240	\$3,260

Academic English

Program Length	1 Semester
Tuition and Fees	\$9,990
Housing	\$5,550
Meals	\$3,340
Insurance	\$1,310

Campus housing

Undergraduate and Academic English

Double occupancy rooms: **\$5,550/semester**

On-campus housing is required for IYO, AE+IYO and UTP students aged 21 and under. Prices for housing include breaks during the academic year (spring break, holidays, etc.). Housing prices are estimated based on accommodations in the Angel Cabrera Global Center. The estimated cost of books and supplies is \$640 per semester (purchased by student).

Graduate

Double occupancy rooms: **\$5,550/semester**

The estimated cost of books and supplies is \$640 per semester (purchased by student).

Undergraduate Programs: International Year One (IYO), Undergraduate Transfer Program (UTP) and Direct Entry
Graduate Programs: Graduate Pathway (GPW) and Bridge

Program Group ¹	Scholarship Name	Amount	Duration	Eligibility and Learn More	Tuition	Maximum Scholarship Available	Annual Net Tuition with Scholarship ²
Undergraduate	IYO, UTP Regional Scholarships - Undergraduate	\$2,500-\$10,000 per year	One time on the first year/semester	<ul style="list-style-type: none"> Limited availability; first come, first served Applicable to International Year One or Undergraduate Transfer program enrollments Personal Statement or Scholarship Interview may be required for some regions Contact your INTO regional staff or Mason representative for more information 	\$42,670	\$10,000	\$32,670
	IYO, UTP Regional Awards (Vietnam, Thailand, Indonesia)	\$12,000-\$15,000 per year (\$48,000-\$60,000 total)	Up to 4 years (renewable)	<ul style="list-style-type: none"> Awarded automatically with offer Applicable to International Year One or Undergraduate Transfer Program enrollments Region/Nationality based awards \$7,500 per 1-Semester, and \$12,000 per 2 and 3-Semester (Indonesia and Thailand) \$8,500 per 1-Semester, and \$15,000 per 2 and 3-Semester (Vietnam) Renewable as long as student remains in good academic standing, maintaining GPA 2.0+ Contact your INTO regional staff or Mason representative for more information 	\$42,670	\$15,000	\$27,670
	IYO, UTP Undergraduate Progression	\$3,000-\$6,000 per year (\$9,000-\$18,000 total)	Up to 3 years (renewable)	<ul style="list-style-type: none"> Successful completion of International Year One or Undergraduate Transfer Program and matriculate to Mason Achieve a minimum GPA 3.0 on International Year One or University Transfer Program to qualify for \$3,000 per year Achieve a minimum GPA 3.5 on International Year One or University Transfer Program to qualify for \$6,000 per year Maintain consecutive enrollment at Mason as a full time degree seeking student in an approved undergraduate program Renewable up to 3 years, as long as student remains in good academic standing, maintaining a GPA 3.0+ 	\$39,170	\$6,000	\$33,170
Graduate	Direct Entry George Mason Undergraduate International Scholarship	Up to \$20,000 per year (Up to \$80,000 total)	Up to 4 years (renewable)	<ul style="list-style-type: none"> Directly admitted international students are eligible for consideration of merit scholarships Applicable to full time first year Direct-entry degree-seeking international enrollments High academic standing Must be non-immigrant and non-resident status, and require a F-1 visa For more information, visit www.gmu.edu/financial-aid/types-aid/scholarships 	\$39,170	\$20,000	\$19,170
	GPW, Bridge Regional Scholarships - Graduate	\$2,500-\$10,000 per year	One time on the first year/semester	<ul style="list-style-type: none"> Limited availability; first come, first served Applicable to Graduate Pathway program enrollments Personal Statement or Scholarship Interview may be required for some regions Contact your INTO regional office or Mason representative for more information 	\$42,670	\$10,000	\$32,670

All scholarships are subject to change.

Scholarship awards may be lower in value than those published here. Scholarship values presented here are based on achieving the highest award available.

Scholarships are subject to limited availability, deadlines and other terms and conditions. Please check with your INTO regional office or refer to your scholarship letter for more details.

Students on government scholarships or sponsored by an external entity may not be eligible for some of these scholarships.

¹ Program Group relates to the initial program enrolled to qualify for this scholarship.

² Net Tuition is an estimate based on the highest scholarship award applied to the first year of a student's tuition or upon progression.

Note: Graduate direct admission tuition and fees may vary depending on academic program.

[†] 3 semesters assumed to be fall/spring/summer. Prices may differ depending on other combinations of semesters.

Are you an F-1 student? You will need to provide proof of funding in order to get your I-20. Proof of funding is a way a student shows they have sufficient funds (usually via a recent bank statement) to live and study full-time in the US for up to one academic year. This is different from the cost of attendance OR a statement of account. The proof of funding amount will not be an amount that is billed to you and is solely for immigration purposes. To find out more about proof of finances for immigration purposes, visit www.intostudy.com/en/mason/costs

HOW TO APPLY

Choose from two easy ways to apply

1 Apply via your local INTO educational counselor

2 Apply online
Complete our online application form:

INTO Mason Programs:
apply.intostudy.com/mason

Direct Undergraduate:
www2.gmu.edu/admissions-aid/apply-now

Direct Graduate:
www2.gmu.edu/admissions-aid/apply-now



INTO George Mason University

George Mason University
4400 University Drive, MS 6D11
Fairfax, VA 22030
USA

T: +1 703 993 4501
F: +1 703 993 4502
E: INTOadmissions@gmu.edu
Whatsapp: +1 703-993-5337

www.intostudy.com/mason

Find us on:

 facebook.com/INTOmason

 instagram.com/INTO_mason

 twitter.com/INTO_Mason

 myin.to/MasonYouTube

WeChat



Virtual Campus Tour

Take a campus tour from home with Mason's Virtual Tour at

www.youvisit.com/gmu



INTO

Through innovative partnerships with leading universities, we expand opportunities for higher education, ensuring success and transforming the lives of our students and staff.

INTO GIVING

Working across the globe, INTO Giving supports projects that increase access to education and improve the quality of teaching and learning. For more information, visit www.into-giving.com

Discover more online

For counselors:
partnerportal.intoglobal.com/gmu

For students:
www.intostudy.com/mason

Connect with us



Education counselor's stamp